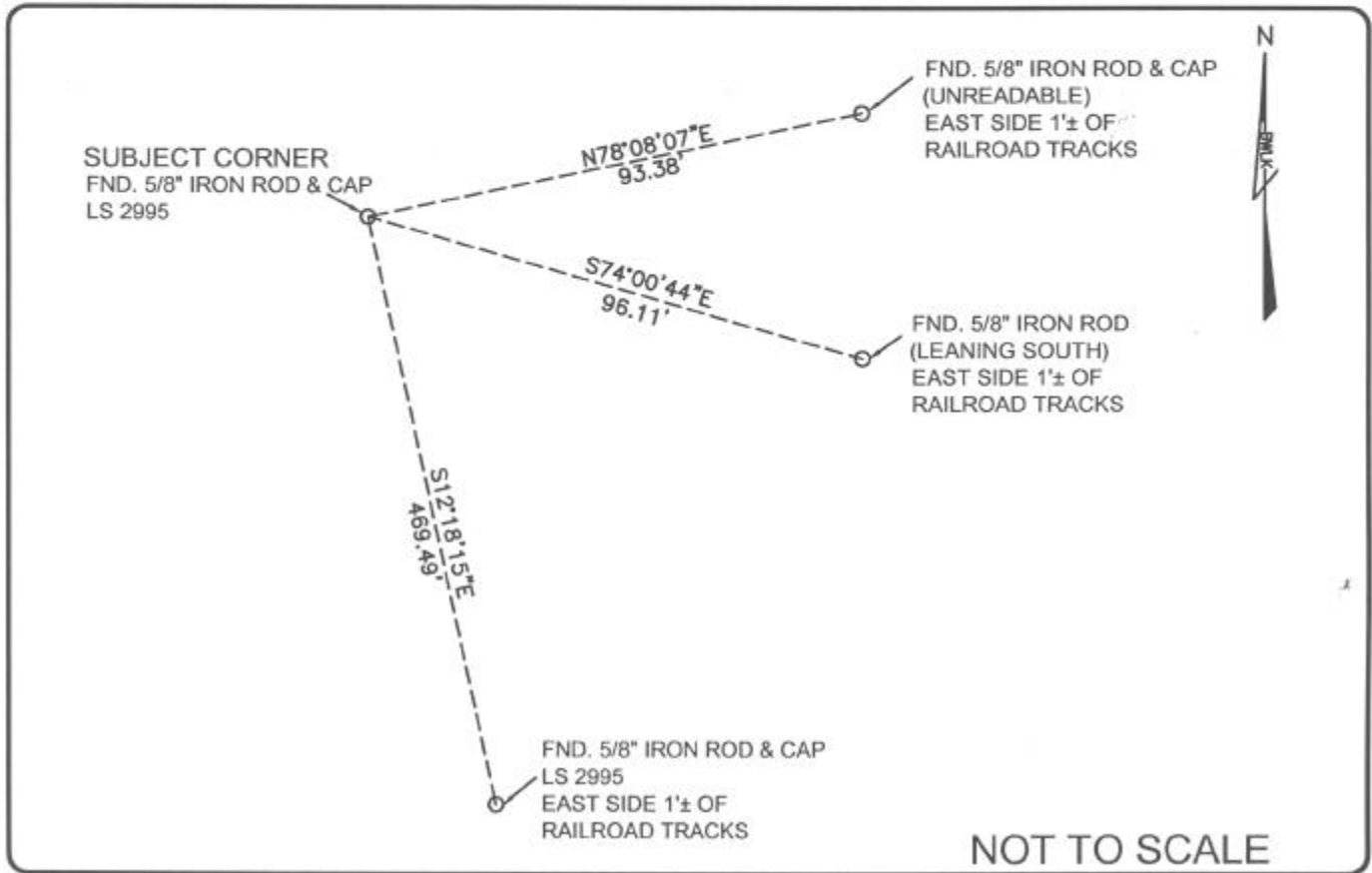


LAND CORNER RECORD

PUBLIC WORKS
 LEE COUNTY, FLORIDA
 Address - 1500 Monroe St., Ft. Myers, Fla. 33901 Phone : (239) 479-8900



NOT TO SCALE

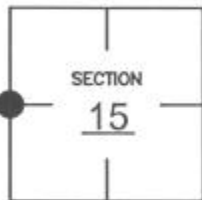
COMMENTS:

Recovered corner and 3 references shown on CCR #65576.

Note: Based on observed coordinates and measurements to references, the corner appears to have been moved 0.12'± west.

CORNER DESCRIPTION

W 1/4 Corner
 Section 15
 Township 47
 Range 25



HORIZONTAL POSITION INFORMATION

Florida West Zone, NAD 1983(1990 Adjustment)
 Northing(ft) 745182.902 Easting(ft) 720294.934
 Latitude 26°23'01.1421\"N Longitude 81°48'14.8125\"W
 Scale Factor .999945892

EXISTING CERTIFIED CORNER RECORDS

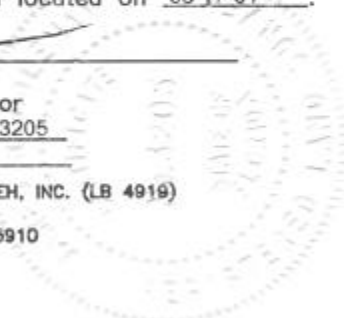
Document No.	Date
<u>61584</u>	<u>03-01-98</u>
<u>65576</u>	<u>11-01-99</u>

The above documents are based on FDEP Bureau of Surveying and Mapping Record Information.

I hereby certify the monument and accessories shown above were field located on 06-17-04.

James R. Coleman
 JAMES R. COLEMAN
 Registered Land Surveyor
 Florida Certificate No. 3205
 Date Signed 07-29-04

BEAN, WHITAKER, LUTZ & KAREH, INC. (LB 4919)
 13041 McGregor Boulevard
 Fort Myers, Florida 33919-5910
 Phone: (239) 481-1331



CO-ORDINATE NO. 8336

BLM REFERENCE NO. T47SR25E400440