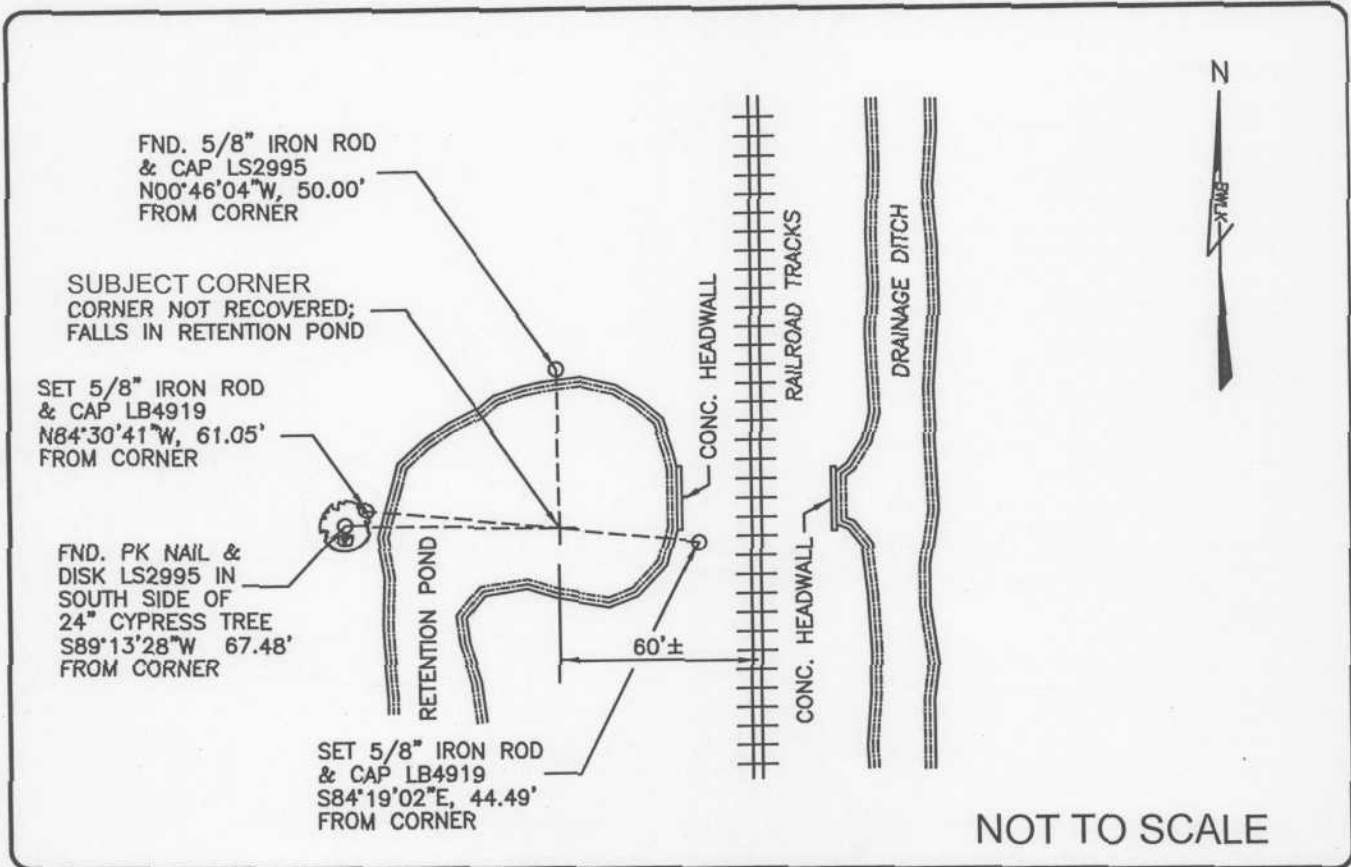


LAND CORNER RECORD

PUBLIC WORKS
LEE COUNTY, FLORIDA

Address - 1500 Monroe St., Ft. Myers, Fla. 33901

Phone : (239) 479-8900



COMMENTS:

Corner not recovered; falls in retention pond.

Recovered 2 references as described on CCR #65565 and set 2 references.

CORNER DESCRIPTION

E 1/4 Corner
Section 4
Township 47
Range 25



HORIZONTAL POSITION INFORMATION

Florida West Zone, NAD 1983(1990 Adjustment)

Northing(ft) 755850.163 Easting(ft) 720137.214

Latitude 26°24'46.79638" N Longitude 81°48'16.36890" W

Scale Factor 0.999945869

EXISTING CERTIFIED CORNER RECORDS

Document No.	Date
19821	10-24-84
65565	11-01-99

The above documents are based on FDEP Bureau of Surveying and Mapping Record Information.

I hereby certify the monument and accessories shown above were field located on 7-14-04.

James R. Coleman
JAMES R. COLEMAN
Registered Land Surveyor
Florida Certificate No. 3205
Date Signed 8-26-04

BEAN, WHITAKER, LUTZ & KAREH, INC. (LB 4919)
13041 McGregor Boulevard
Fort Myers, Florida 33919-5910
Phone: (239) 481-1331

COORDINATE NO. 8384

BLM REFERENCE NO. T47SR25E400640