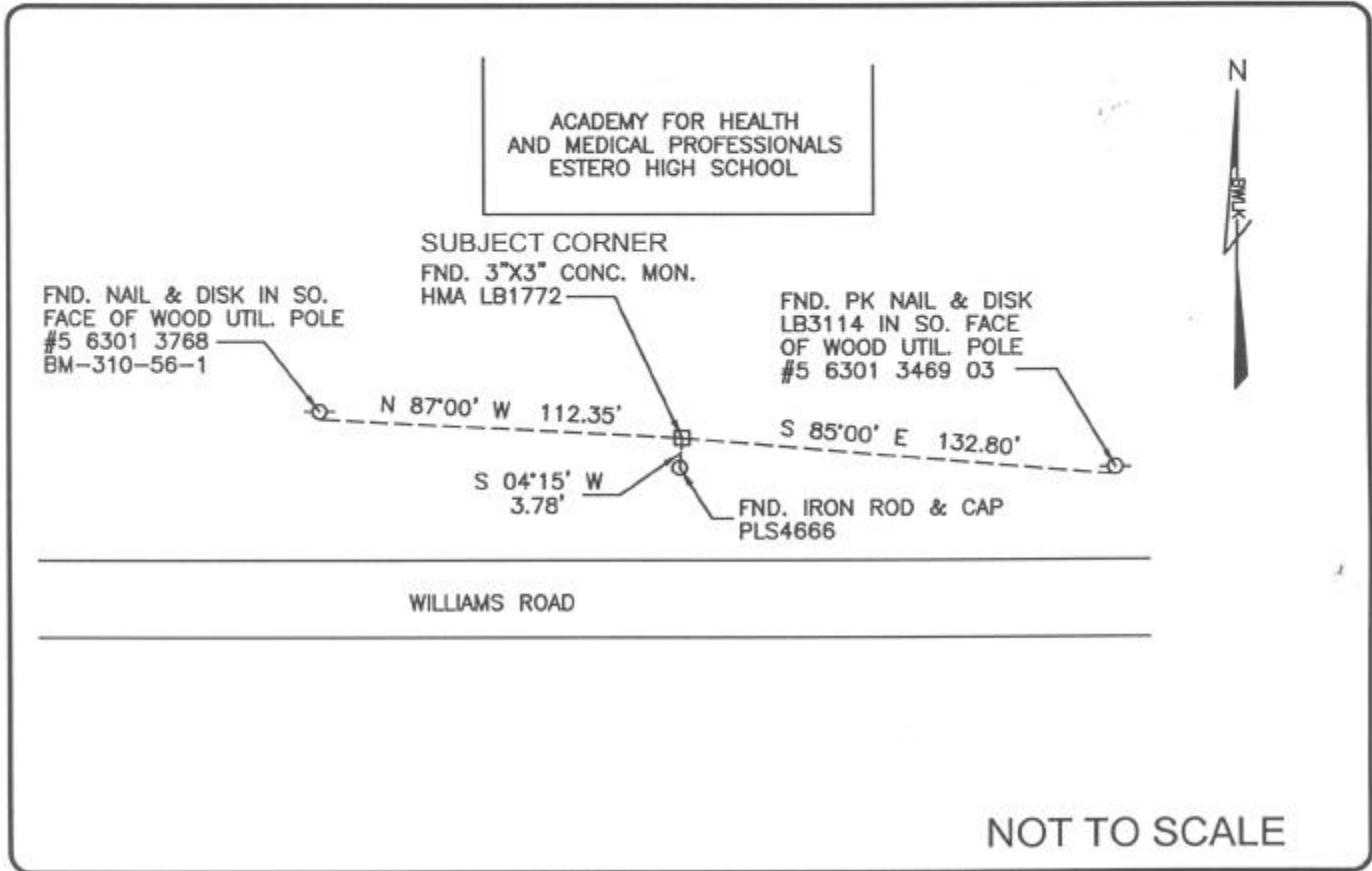


LAND CORNER RECORD

PUBLIC WORKS
 LEE COUNTY, FLORIDA
 Address - 1500 Monroe St., Ft. Myers, Fla. 33901 Phone : (239) 479-8900

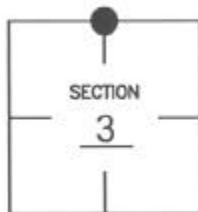


COMMENTS:

Recovered corner and 3 references as described on CCR #79086.

CORNER DESCRIPTION

N 1/4 Corner
 Section 3
 Township 47
 Range 25



HORIZONTAL POSITION INFORMATION

Florida West Zone, NAD 1983(1990 Adjustment)
 Northing(ft) 758578.718 Easting(ft) 722748.390
 Latitude 26°25'13.78073" N Longitude 81°47'47.60053" W
 Scale Factor 0.999946259

EXISTING CERTIFIED CORNER RECORDS

Document No.	Date
<u>19827</u>	<u>10-24-84</u>
<u>79086</u>	<u>7-23-03</u>

The above documents are based on FDEP Bureau of Surveying and Mapping Record Information.

I hereby certify the monument and accessories shown above were field located on 7-06-04.

James R. Coleman
 JAMES R. COLEMAN
 Registered Land Surveyor
 Florida Certificate No. 3205
 Date Signed 8-04-04

BEAN, WHITAKER, LUTZ & KAREH, INC. (LB 4919)
 13041 McGregor Boulevard
 Fort Myers, Florida 33919-5910
 Phone: (239) 481-1331

COORDINATE NO. 8354

BLM REFERENCE NO. T47SR25E440700