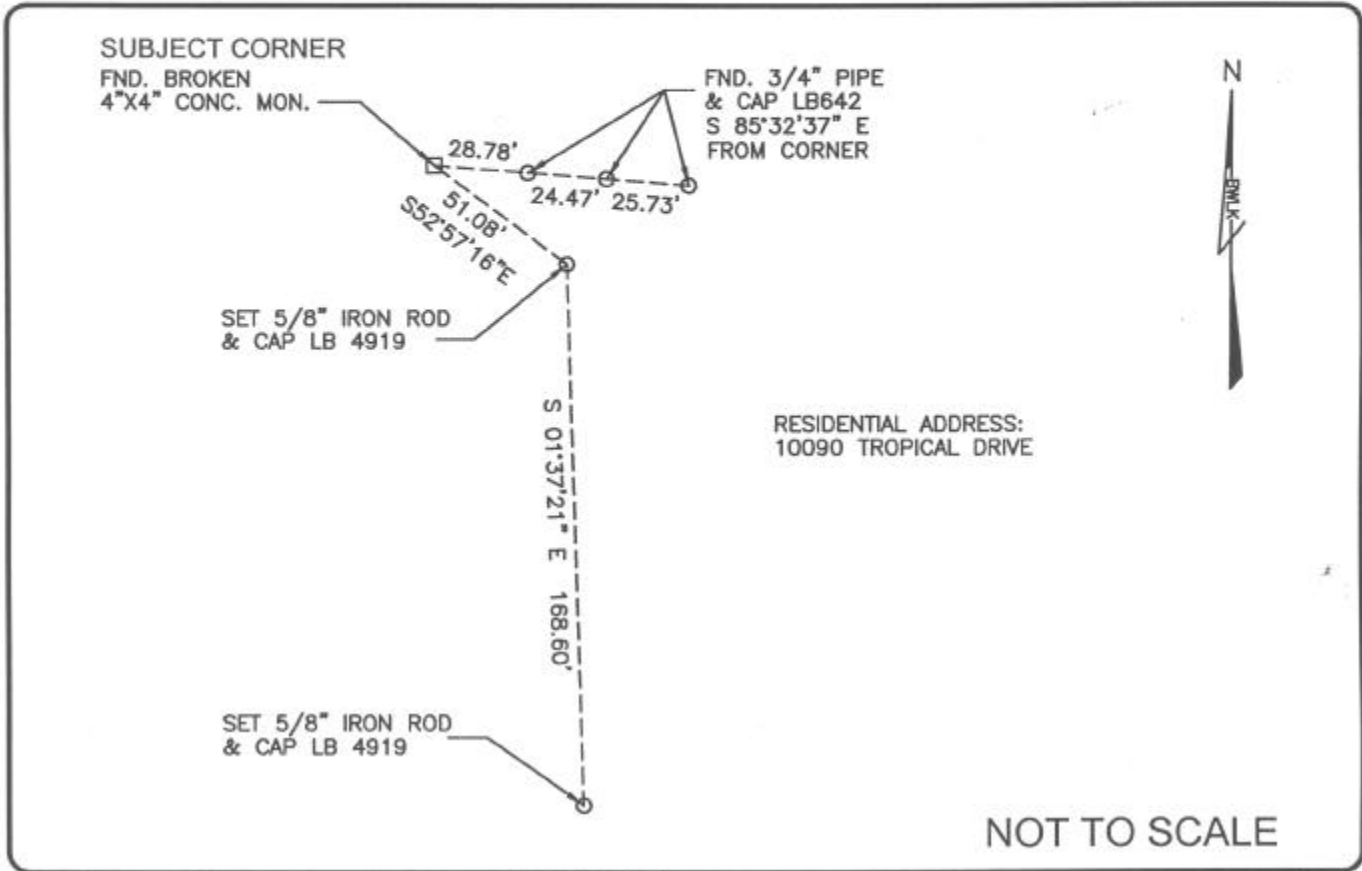


LAND CORNER RECORD

PUBLIC WORKS
LEE COUNTY, FLORIDA

Address - 1500 Monroe St., Ft. Myers, Fla. 33901

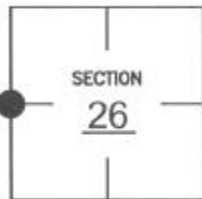
Phone : (239) 479-8900



COMMENTS:

CORNER DESCRIPTION

W 1/4 Corner
Section 26
Township 47
Range 25



Recovered corner and 3 references as described on CCR #74980.

HORIZONTAL POSITION INFORMATION

Florida West Zone, NAD 1983(1990 Adjustment)

Northing(ft) 733962.880 Easting(ft) 725805.731

Latitude 26°21'09.92855" N Longitude 81°47'14.41659" W

Scale Factor 0.999946737

EXISTING CERTIFIED CORNER RECORDS

Document No.	Date
<u>74980</u>	<u>4-16-02</u>

The above documents are based on FDEP Bureau of Surveying and Mapping Record Information.

I hereby certify the monument and accessories shown above were field located on 7-08-04.

James R. Coleman

JAMES R. COLEMAN
Registered Land Surveyor
Florida Certificate No. 3205
Date Signed 8-04-04

BEAN, WHITAKER, LUTZ & KAREH, INC. (LB 4919)
13041 McGregor Boulevard
Fort Myers, Florida 33919-5910
Phone: (239) 481-1331

COORDINATE NO. 8365

BLM REFERENCE NO. T47SR25E500240