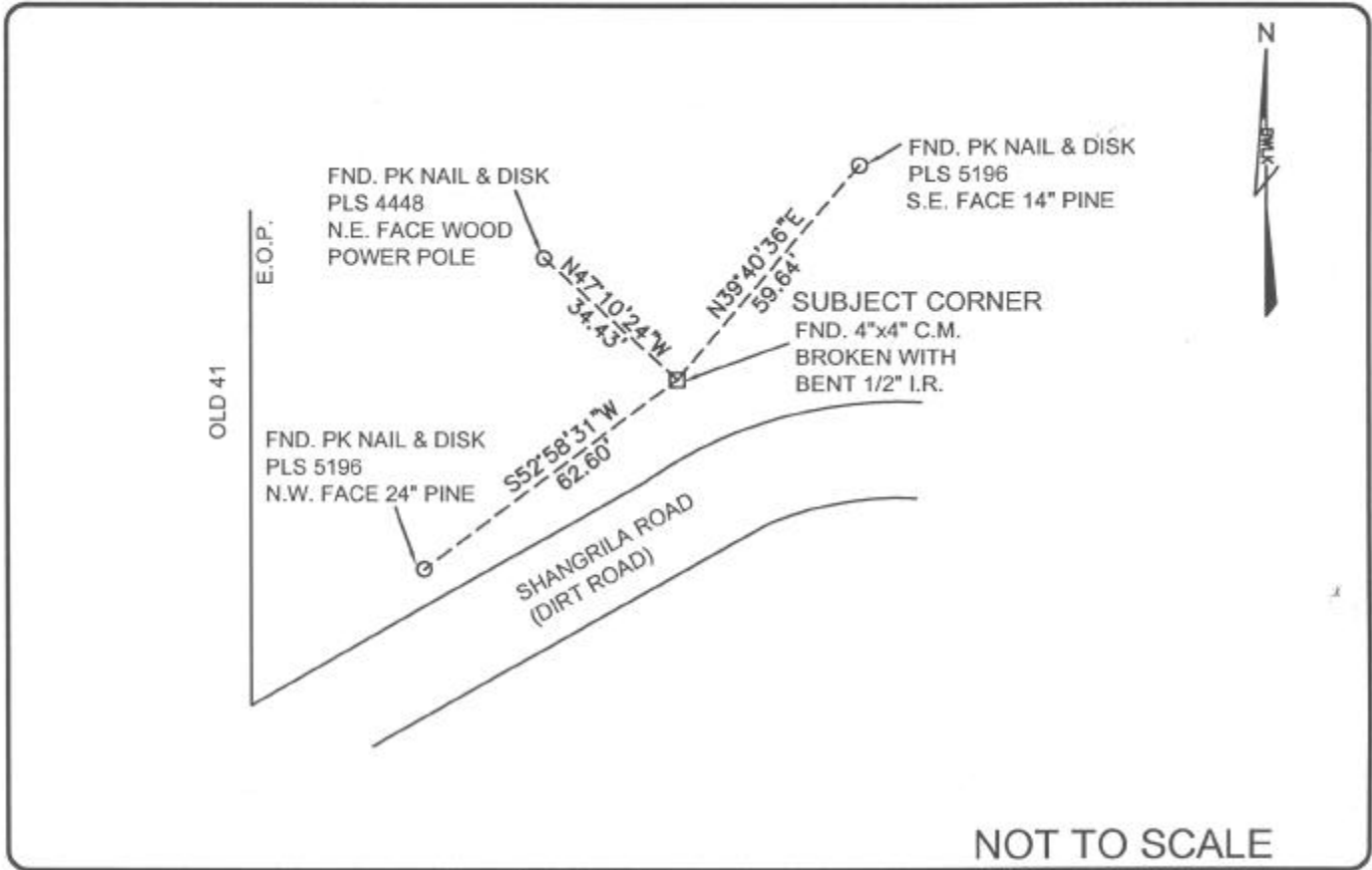


LAND CORNER RECORD

PUBLIC WORKS  
LEE COUNTY, FLORIDA

Address - 1500 Monroe St., Ft. Myers, Fla. 33901

Phone : (239) 479-8900



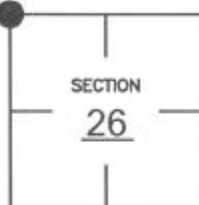
NOT TO SCALE

COMMENTS:

Recovered corner and 3 references as described on CCR #74969.

CORNER DESCRIPTION

NW Corner  
Section 26  
Township 47  
Range 25



HORIZONTAL POSITION INFORMATION

Florida West Zone, NAD 1983(1990 Adjustment)

Northing(ft) 736654.713 Easting(ft) 725735.356

Latitude 26°21'36.591\"N Longitude 81°47'15.142\"W

Scale Factor .999946726

EXISTING CERTIFIED CORNER RECORDS

Document No.	Date
<u>74969</u>	<u>04-16-02</u>

The above documents are based on FDEP Bureau of Surveying and Mapping Record Information.

I hereby certify the monument and accessories shown above were field located on 06-10-04.

*James R. Coleman*

JAMES R. COLEMAN  
Registered Land Surveyor  
Florida Certificate No. 3205  
Date Signed 07-29-04

BEAN, WHITAKER, LUTZ & KAREH, INC. (LB 4919)  
13041 McGregor Boulevard  
Fort Myers, Florida 33919-5910  
Phone: (239) 481-1331

CO-ORDINATE NO. 8331

BLM REFERENCE NO. T47SR25E500300