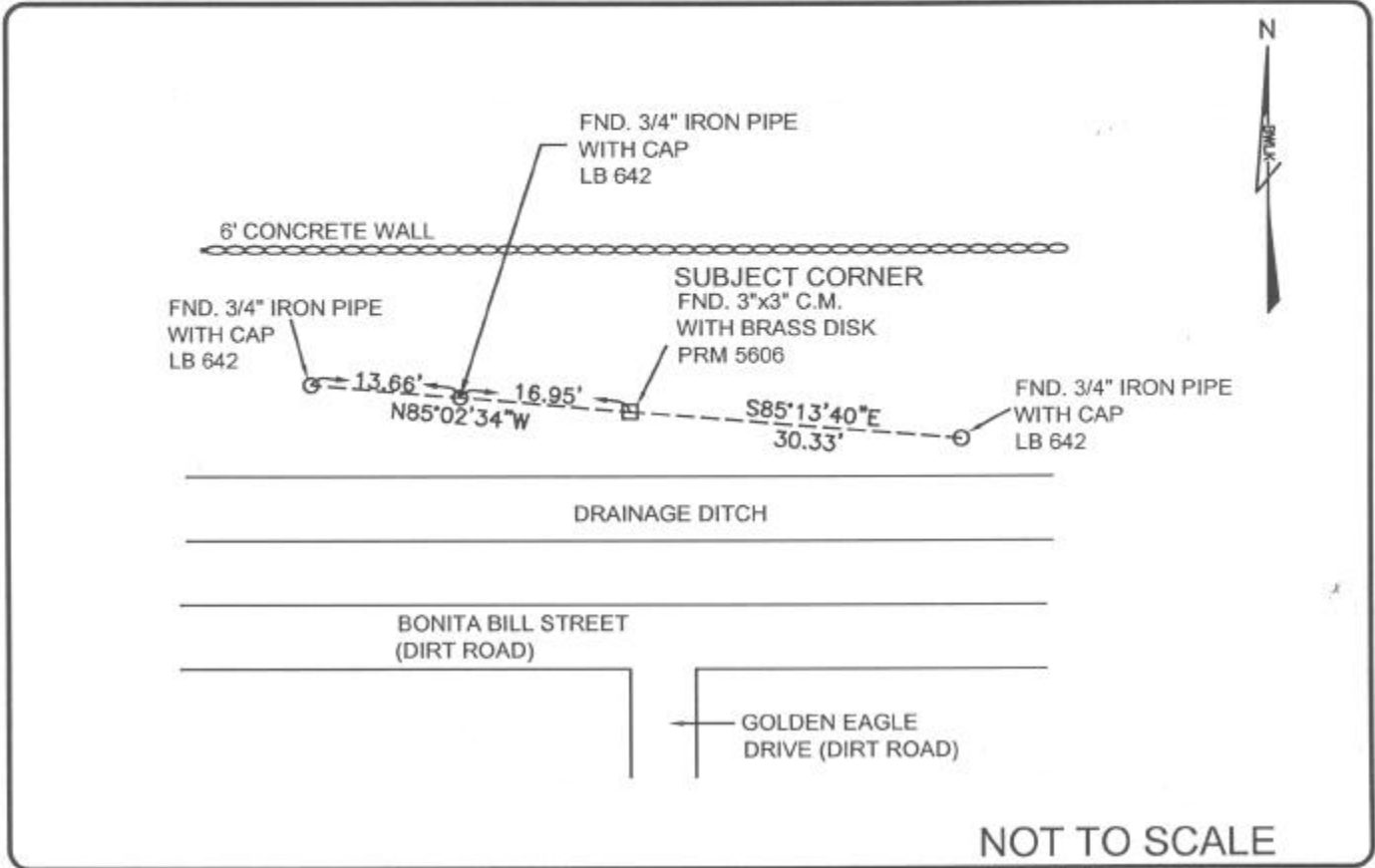


LAND CORNER RECORD

PUBLIC WORKS
 LEE COUNTY, FLORIDA
 Address - 1500 Monroe St., Ft. Myers, Fla. 33901 Phone : (239) 479-8900



NOT TO SCALE

COMMENTS:
 Recovered corner and 3 references as shown on CCR #74958.

CORNER DESCRIPTION

NW Corner
 Section 14
 Township 47
 Range 25



HORIZONTAL POSITION INFORMATION

Florida West Zone, NAD 1983(1990 Adjustment)
 Northing(ft) 747924.930 Easting(ft) 725603.831
 Latitude 26°23'28.2168\"N Longitude 81°47'16.3838\"W
 Scale Factor .999946705

EXISTING CERTIFIED CORNER RECORDS

Document No.	Date
<u>18966</u>	<u>05-15-84</u>
<u>74958</u>	<u>04-16-02</u>

The above documents are based on FDEP Bureau of Surveying and Mapping Record Information.

I hereby certify the monument and accessories shown above were field located on 06-17-04

James R. Coleman
 JAMES R. COLEMAN
 Registered Land Surveyor
 Florida Certificate No. 3205
 Date Signed 07-29-04

BEAN, WHITAKER, LUTZ & KAREH, INC. (LB 4919)
 13041 McGregor Boulevard
 Fort Myers, Florida 33919-5910
 Phone: (239) 481-1331

CO-ORDINATE NO. 8332

BLM REFERENCE NO. T47SR25E500500