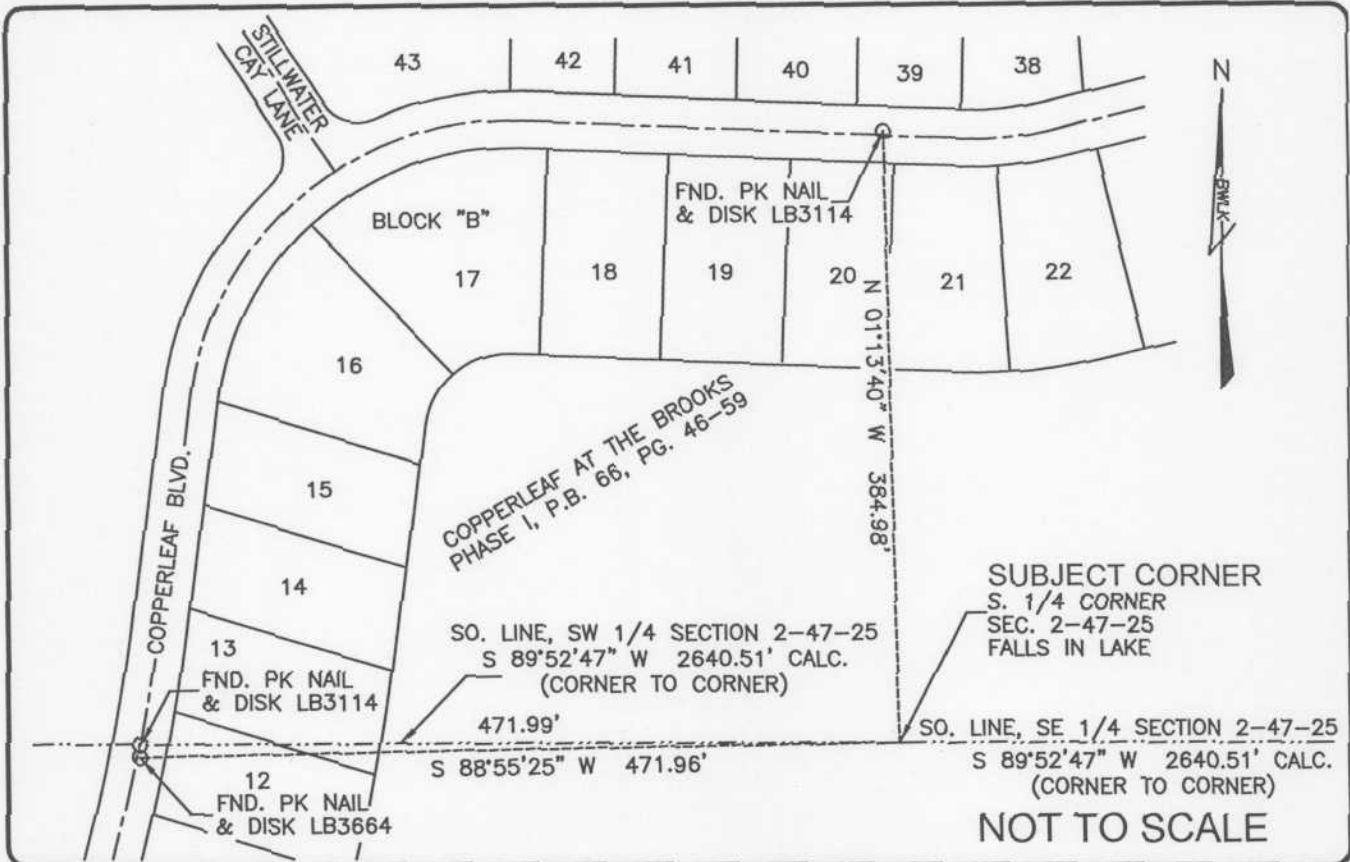


LAND CORNER RECORD

PUBLIC WORKS
LEE COUNTY, FLORIDA

Address - 1500 Monroe St., Ft. Myers, Fla. 33901

Phone : (239) 479-8900

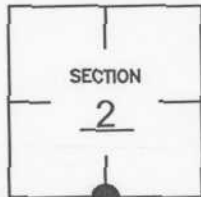


COMMENTS:

CORNER DESCRIPTION

Recovered 3 references shown on CCR #81654. Corner falls in subdivision lake. BWLK calculated position by single proportion.

S 1/4 Corner
Section 2
Township 47
Range 25



HORIZONTAL POSITION INFORMATION

Florida West Zone, NAD 1983(1990 Adjustment)
Northing(ft) 753261.6060 Easting(ft) 728142.3862
Latitude 26°24'21.03072" N Longitude 81°46'48.36672" W
Scale Factor 0.999947116

EXISTING CERTIFIED CORNER RECORDS

Document No.	Date
<u>18963</u>	<u>5-15-84</u>
<u>81654</u>	<u>5-12-04</u>

The above documents are based on FDEP Bureau of Surveying and Mapping Record Information.

I hereby certify the monument and accessories shown above were field located on 8-09-04.

James R. Coleman
JAMES R. COLEMAN
Registered Land Surveyor
Florida Certificate No. 3205
Date Signed 8-12-04

BEAN, WHITAKER, LUTZ & KAREH, INC. (LB 4919)
13041 McGregor Boulevard
Fort Myers, Florida 33919-5910
Phone: (239) 481-1331

CO-ORDINATE NO. 8361

BLM REFERENCE NO. T47SR25E540600