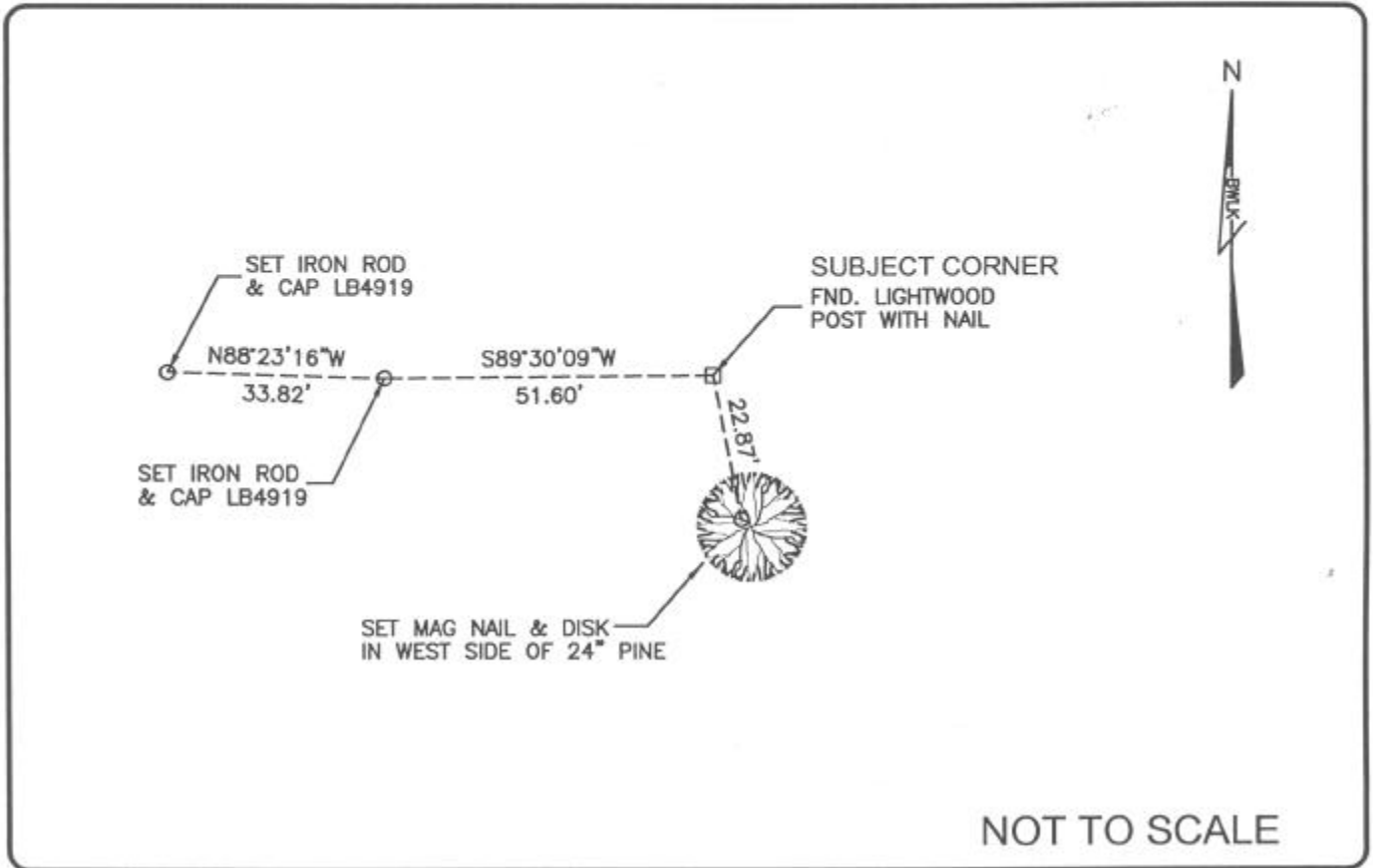


LAND CORNER RECORD

PUBLIC WORKS
LEE COUNTY, FLORIDA

Address - 1500 Monroe St., Ft. Myers, Fla. 33901

Phone : (239) 479-8900

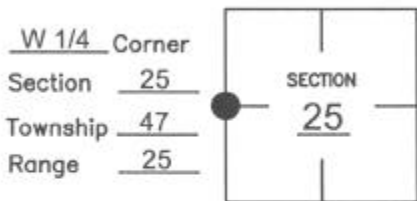


NOT TO SCALE

COMMENTS:

Recovered corner as described on CCR #74977 and CCR #81769.

CORNER DESCRIPTION



HORIZONTAL POSITION INFORMATION

Florida West Zone, NAD 1983(1990 Adjustment)

Northing(ft) 734052.796 Easting(ft) 731115.652

Latitude 26°21'10.72916\" N Longitude 81°46'16.04010\" W

Scale Factor 0.999947617

EXISTING CERTIFIED CORNER RECORDS

Document No.	Date
<u>74977</u>	<u>4-16-02</u>
<u>81769</u>	<u>5-17-04</u>

The above documents are based on FDEP Bureau of Surveying and Mapping Record Information.

I hereby certify the monument and accessories shown above were field located on 6-22-04.

JAMES R. COLEMAN
Registered Land Surveyer
Florida Certificate No. 3205
Date Signed 8-04-04

BEAN, WHITAKER, LUTZ & KAREH, INC. (LB 4919)
13041 McGregor Boulevard
Fort Myers, Florida 33919-5910
Phone: (239) 481-1331

COORDINATE NO. 8341

BLM REFERENCE NO. T47SR25E600240