

# CERTIFIED CORNER RECORD

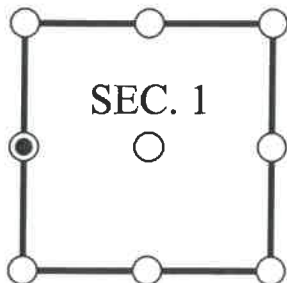
DOC. # \_\_\_\_\_

W 1/4 Corner of Section 1, Township 47, Range 25, LEE County

- GLO CORNER (PROVEN)  
  LAND GRANT CORNER  
  HISTORIC CORNER  
  OTHER CORNER

CORNER DESCRIPTION:                      MONUMENT DESCRIPTION (EVIDENCE FOUND OR METHOD USED TO SET)

Depict corner with



FOUND 4x4" CONCRETE MONUMENT POST WITH DISK CONSISTENT WITH CORNER RECORD 081652, DISK NOT LEGIBLE AS IT WAS UNDER WATER AT TIME OF RECOVERY, STAMPING PER PREVIOUS RECORD SHOWN FOR REFERENCE.

DENI  
ASSOCIATES  
T47S  
211 LS 3950  
R25E

HORIZONTAL POSITION INFORMATION ( if determined ):

Latitude: N26° 24' 47.3358"                      Longitude: W81° 46' 19.8973"

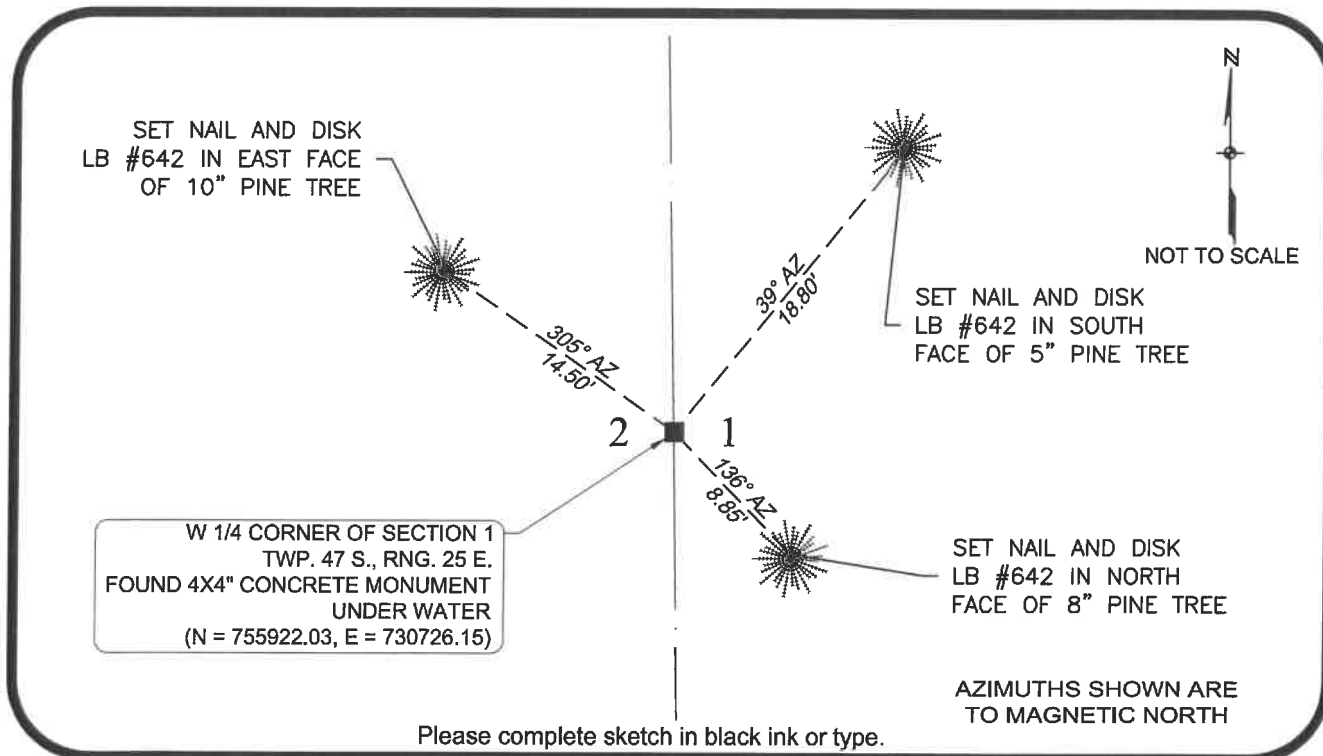
Y(NORTHING-Ft.) 755922.028    X(EASTING-Ft.) 730726.152    Zone FL West

Horizontal datum: NAD83(2011)

Source: \_\_\_\_\_

Determined by: GPS (VRS)

- EXISTING  
 OBLITERATED  
 LOST



**SURVEYORS CERTIFICATE:**

I certify the monument and accessories indicated above were field located on 10/07/2017

  
 SIGNATURE \_\_\_\_\_ 4912 PSM NO.  
 Johnson Engineering, Inc. 642  
 FIRM OR AGENCY LB NO.  
 2122 Johnson Street  
 ADDRESS  
 Fort Myers Florida 33901  
 CITY STATE ZIP  
 866-367-4400  
 PHONE NUMBER DATE

SEND ORIGINAL TO:  
 Department of Environmental Protection  
 Bureau of Surveying and Mapping  
 3900 Commonwealth Boulevard  
 Mail Station 105  
 Tallahassee, Florida 32399

**NOTE: Do not make changes to this form**

D.E.P. USE ONLY	
Processed: _____	
B.L.M. - I.D. _____	
QUAD - I.D. _____	

**EMBOSSSED SEAL OVER SIGNATURE**