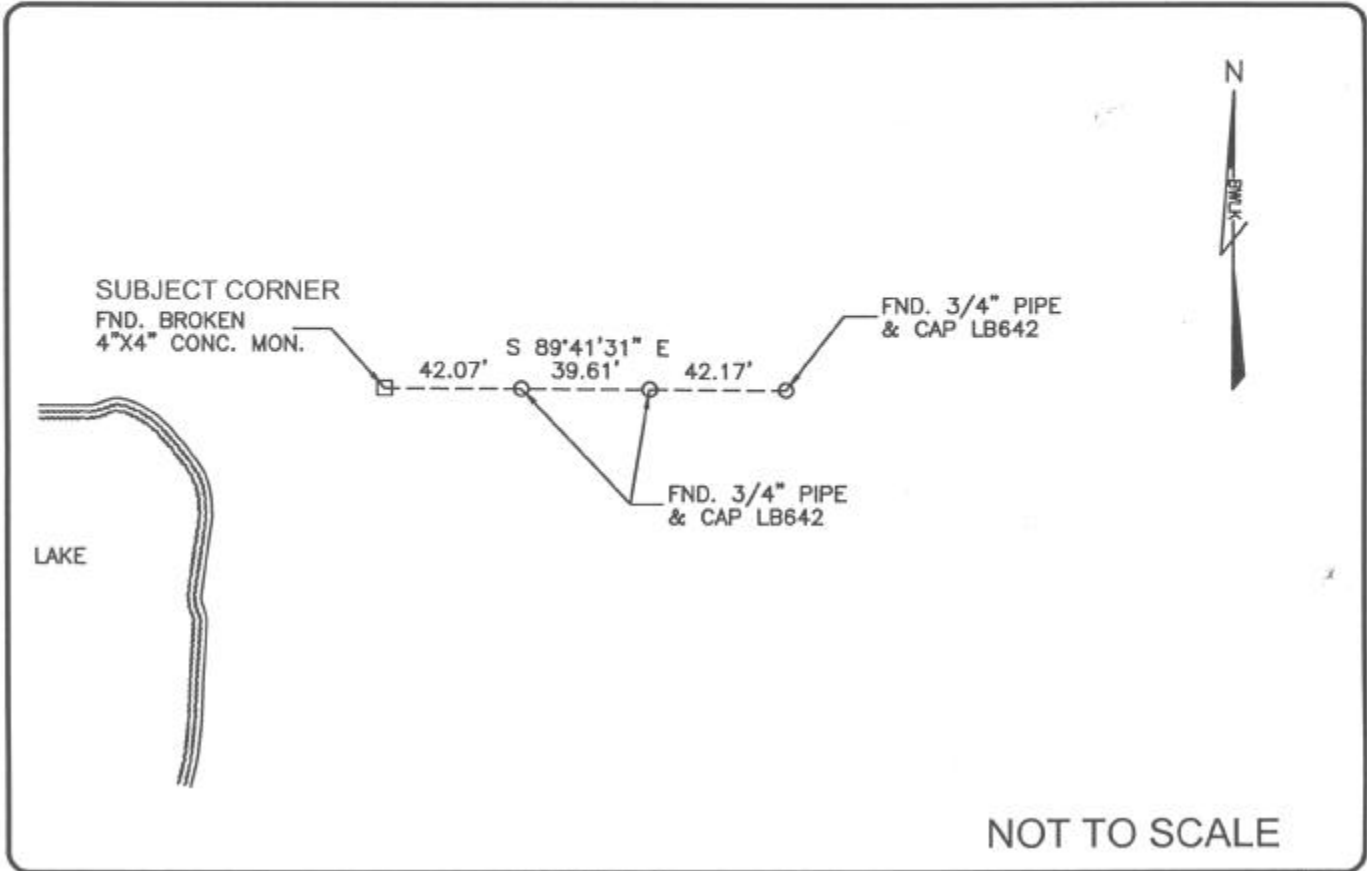


LAND CORNER RECORD

PUBLIC WORKS  
LEE COUNTY, FLORIDA

Address - 1500 Monroe St., Ft. Myers, Fla. 33901

Phone : (239) 479-8900

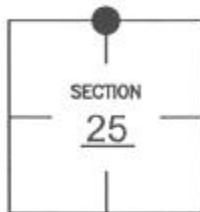


COMMENTS:

Recovered corner and 3 references as described on CCR #74973.

CORNER DESCRIPTION

N 1/4 Corner  
Section 25  
Township 47  
Range 25



HORIZONTAL POSITION INFORMATION

Florida West Zone, NAD 1983(1990 Adjustment)

Northing(ft) 736711.127 Easting(ft) 733713.120

Latitude 26°21'37.01179" N Longitude 81°45'47.43111" W

Scale Factor 0.999948071

EXISTING CERTIFIED CORNER RECORDS

Document No.	Date
<u>74973</u>	<u>4-16-02</u>

The above documents are based on FDEP Bureau of Surveying and Mapping Record Information.

I hereby certify the monument and accessories shown above were field located on 6-09-04.

*James R. Coleman*  
\_\_\_\_\_  
JAMES R. COLEMAN  
Registered Land Surveyor  
Florida Certificate No. 3205  
Date Signed 8-04-04

BEAN, WHITAKER, LUTZ & KAREH, INC. (LB 4919)  
13041 McGregor Boulevard  
Fort Myers, Florida 33919-5910  
Phone: (239) 481-1331

COORDINATE NO. 8329

BLM REFERENCE NO. T47SR25E640300