

# CERTIFIED CORNER RECORD

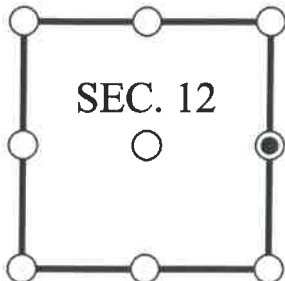
DOC. # \_\_\_\_\_

E 1/4 Corner of Section 12, Township 47, Range 25, LEE County

- GLO CORNER (PROVEN)  
  LAND GRANT CORNER  
  HISTORIC CORNER  
  OTHER CORNER

CORNER DESCRIPTION:                      MONUMENT DESCRIPTION (EVIDENCE FOUND OR METHOD USED TO SET)

Depict corner with



FOUND FOUND 5/8" IRON AND CAP, I.D. NOT LEGIBLE,  
CONSISTENT WITH CORNER RECORD 081743.

HORIZONTAL POSITION INFORMATION ( if determined ):

Latitude: N26° 23' 51.6825"                      Longitude: W81° 45' 20.7800"

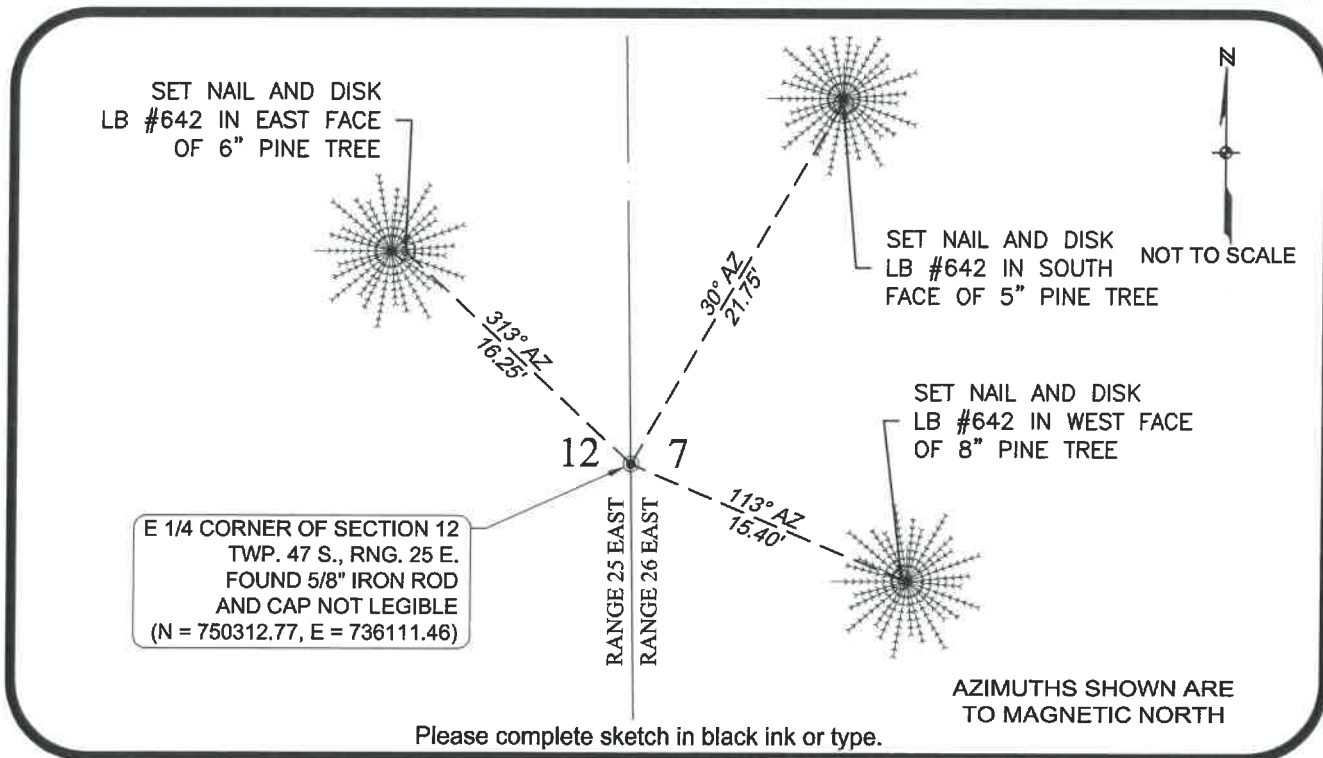
Y(NORTHING-Ft.) 750312.773    X(EASTING-Ft.) 736111.462    Zone FL West

Horizontal datum: NAD83(2011)

Source: \_\_\_\_\_

Determined by: GPS (VRS)

- EXISTING  
 OBLITERATED  
 LOST



**SURVEYORS CERTIFICATE:**

I certify the monument and accessories indicated above were field located on 10/06/2017

SIGNATURE: *[Signature]*                      4912                      PSM NO.  
 Johnson Engineering, Inc.                      642                      LB NO.  
 FIRM OR AGENCY  
 2122 Johnson Street                      ADDRESS  
 Fort Myers                      Florida                      33901                      CITY                      STATE                      ZIP  
 866-367-4400                      PHONE NUMBER                      DATE

**EMBOSSSED SEAL OVER SIGNATURE**

SEND ORIGINAL TO:  
 Department of Environmental Protection  
 Bureau of Surveying and Mapping  
 3900 Commonwealth Boulevard  
 Mail Station 105  
 Tallahassee, Florida 32399

**NOTE: Do not make changes to this form**

D.E.P. USE ONLY	
Processed:	_____
B.L.M. - I.D.	_____
QUAD - I.D.	_____