

CERTIFIED CORNER RECORD

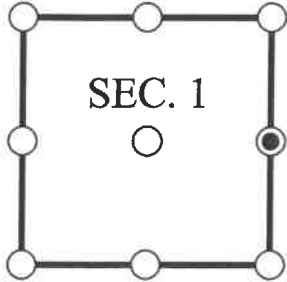
DOC. # _____

E 1/4 Corner of Section 1, Township 47, Range 25, LEE County

- GLO CORNER (PROVEN)
 LAND GRANT CORNER
 HISTORIC CORNER
 OTHER CORNER

CORNER DESCRIPTION: MONUMENT DESCRIPTION (EVIDENCE FOUND OR METHOD USED TO SET)

Depict corner with



FOUND 4x4" CONCRETE MONUMENT POST WITH BROKEN TOP, LOCATION CONSISTENT WITH CORNER RECORD 081649.

HORIZONTAL POSITION INFORMATION (if determined):

Latitude: N26° 24' 47.2760" Longitude: W81° 45' 21.9058"

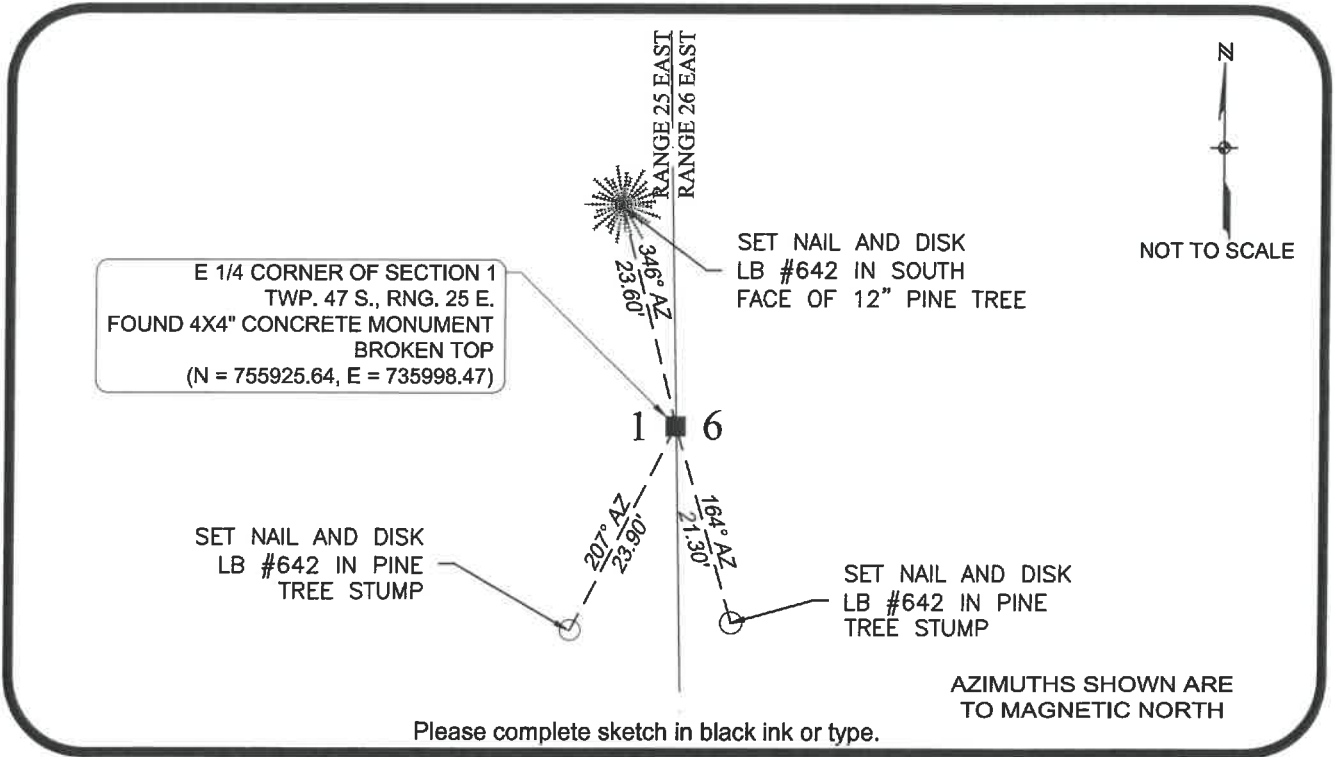
Y(NORTHING-Ft.) 755925.643 X(EASTING-Ft.) 735998.467 Zone FL West

Horizontal datum: NAD83(2011)

Source: _____

Determined by: GPS (VRS)

- EXISTING
 OBLITERATED
 LOST



SURVEYORS CERTIFICATE:

I certify the monument and accessories indicated above were field located on 10/05/2017

SIGNATURE _____ PSM NO. 4912
 Johnson Engineering, Inc. _____ FIRM OR AGENCY 642
 2122 Johnson Street _____ ADDRESS
 Fort Myers _____ Florida 33901 CITY STATE ZIP
 866-367-4400 _____ PHONE NUMBER DATE

SEND ORIGINAL TO:
 Department of Environmental Protection
 Bureau of Surveying and Mapping
 3900 Commonwealth Boulevard
 Mail Station 105
 Tallahassee, Florida 32399

NOTE: Do not make changes to this form

D.E.P. USE ONLY

Processed: _____

B.L.M. - I.D. _____

QUAD - I.D. _____

EMBOSSSED SEAL OVER SIGNATURE