

CERTIFIED CORNER RECORD

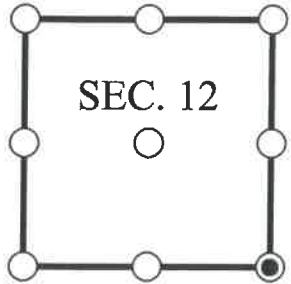
DOC. # _____

SE Corner of Section 12, Township 47, Range 25, LEE County

- GLO CORNER (PROVEN)
 LAND GRANT CORNER
 HISTORIC CORNER
 OTHER CORNER

CORNER DESCRIPTION: MONUMENT DESCRIPTION (EVIDENCE FOUND OR METHOD USED TO SET)

Depict corner with



FOUND LIGHT WOOD POST WITH NAIL CONSISTENT WITH CERTIFIED CORNER RECORD 081748 AND PREVIOUS SURVEY OF SECTIONS 12 AND 7 BY JOHNSON ENGINEERING, INC, DATED 08/15/2003..

HORIZONTAL POSITION INFORMATION (if determined):

Latitude: N26° 23' 22.2640" Longitude: W81° 45' 20.2263"

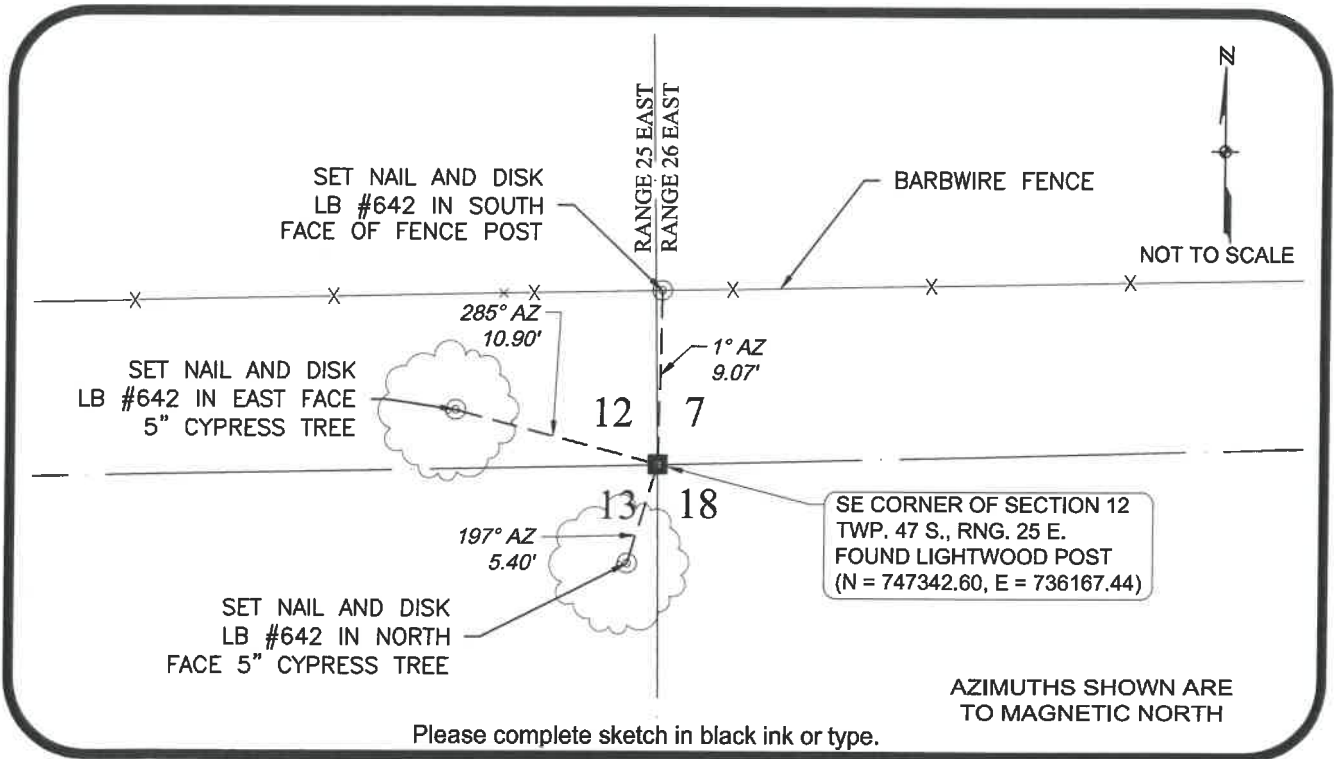
Y(NORTHING-Ft.) 747342.600 X(EASTING-Ft.) 736167.443 Zone FL West

Horizontal datum: NAD83(2011)

Source: _____

Determined by: GPS (VRS)

- EXISTING
 OBLITERATED
 LOST



SURVEYORS CERTIFICATE:

I certify the monument and accessories indicated above were field located on 10/06/2017

SIGNATURE _____ PSM NO. 4912
 Johnson Engineering, Inc. FIRM OR AGENCY LB NO. 642
 2122 Johnson Street
 ADDRESS
 Fort Myers Florida 33901
 CITY STATE ZIP
 866-367-4400
 PHONE NUMBER DATE

SEND ORIGINAL TO:
 Department of Environmental Protection
 Bureau of Surveying and Mapping
 3900 Commonwealth Boulevard
 Mail Station 105
 Tallahassee, Florida 32399

NOTE: Do not make changes to this form

D.E.P. USE ONLY

Processed: _____

B.L.M. - I.D. _____

QUAD - I.D. _____

EMBOSSSED SEAL OVER SIGNATURE