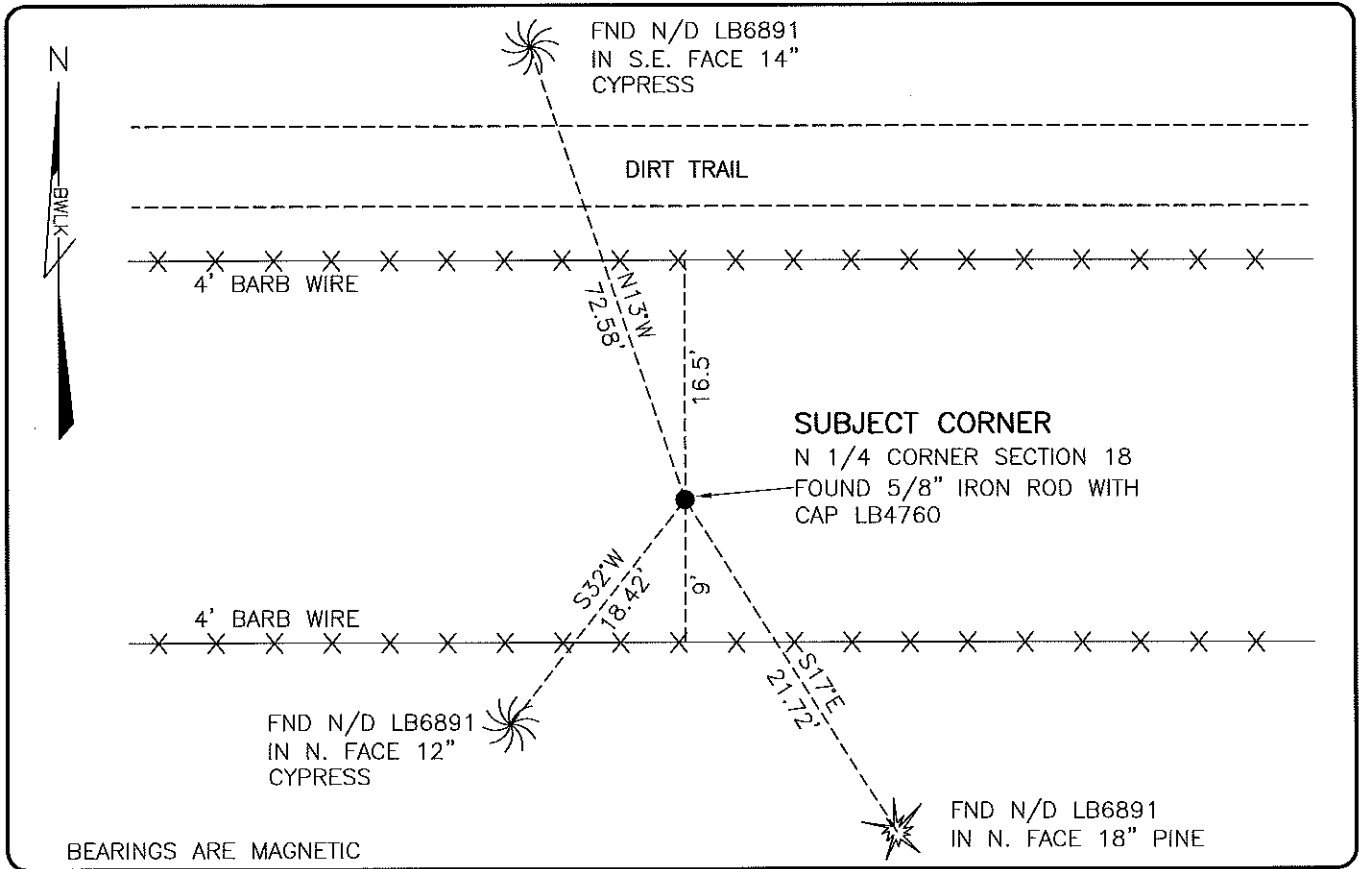


LAND CORNER RECORD

**PUBLIC WORKS
LEE COUNTY, FLORIDA**

Address - 1500 Monroe St., Ft. Myers, Fla. 33901

Phone : (239) 479-8900

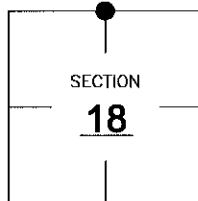


COMMENTS:

FOUND SUBJECT CORNER BASED ON PROPORTIONATE MEASURE RELATIVE TO GOVERNMENT NOTES DATED 1872 & 1874. JOHNSON ENGINEERING SURVEY DATED 1974 SHOWS A CONCRETE POST SET (NOW GONE) ON A SPLIT NOT PROPORTIONATE WITH GOVERNMENT NOTES.

CORNER DESCRIPTION

N 1/4 Corner
Section 18
Township 47
Range 26



HORIZONTAL POSITION INFORMATION

Florida West Zone, NAD 1983(2007 Adjustment)
Northing(ft) 747407.84 Easting(ft) 738587.05
Latitude 26°23'22.8640" Longitude 81°44'53.6165"
Scale Factor 0.99995

EXISTING CERTIFIED CORNER RECORDS

Document No.	Date
NONE	

The above documents are based on FDEP Bureau of Surveying and Mapping Record Information.

I hereby certify the monument and accessories shown above were field located on 3-18-10

Scott C. Whitaker
SCOTT C. WHITAKER
Professional Surveyor and Mapper
Florida Certificate No. 4324
Date Signed 4/26/10

BEAN, WHITAKER, LUTZ & KAREH, INC. (LB 4919)
13041 McGregor Boulevard
Fort Myers, Florida 33919-5910
Phone: (239) 481-1331

POINT NO. 15040

BLM REFERENCE NO. T47SR26E140500