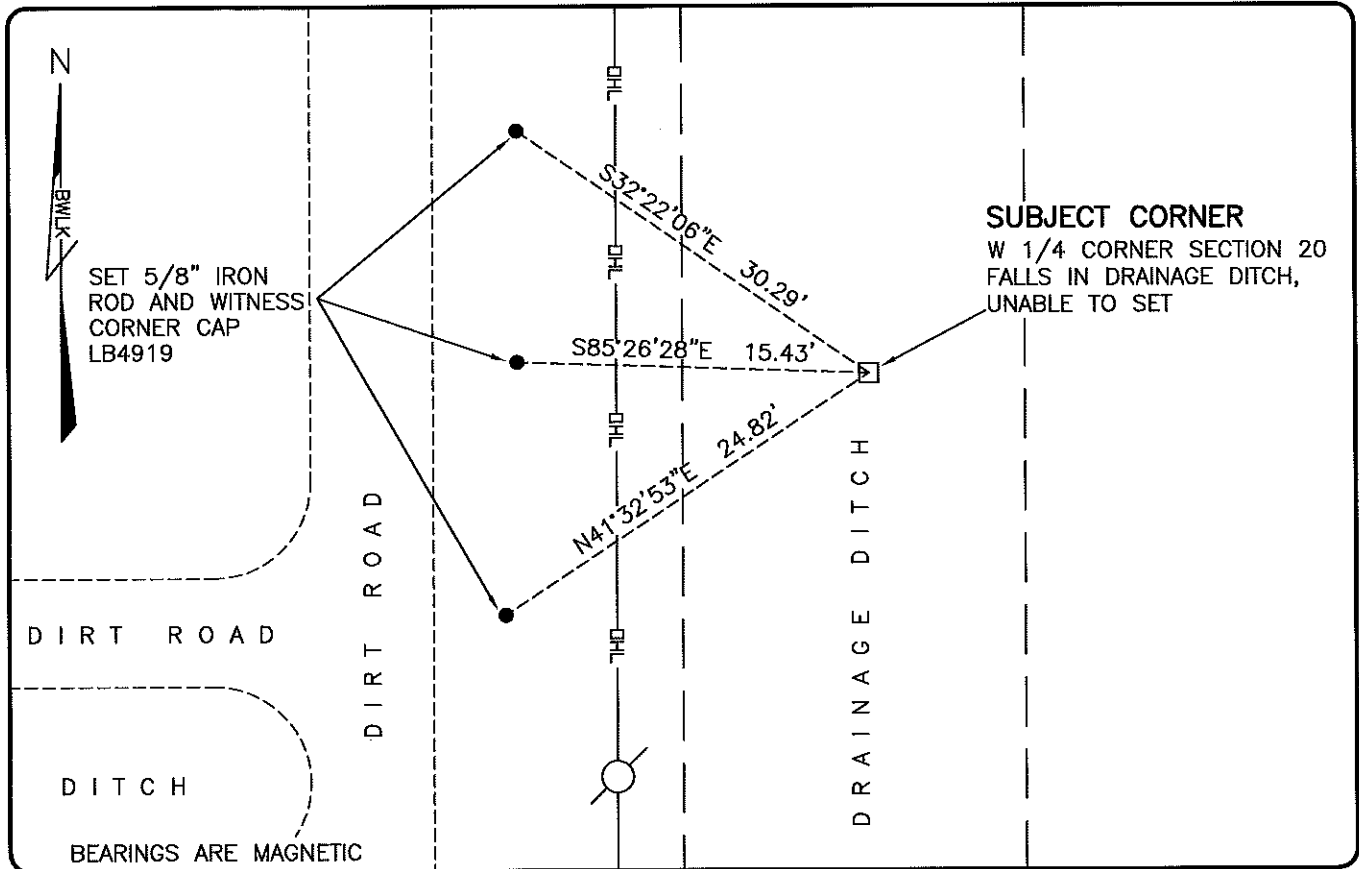


LAND CORNER RECORD

**PUBLIC WORKS
LEE COUNTY, FLORIDA**

Address - 1500 Monroe St., Ft. Myers, Fla. 33901

Phone : (239) 479-8900



COMMENTS:

CALCULATED CORNER IN HARMONY WITH HISTORICAL RECORDS. A MULTIPLE SECTION SURVEY PREPARED BY JOHNSON ENGINEERING IN 1987 SHOWS THIS CORNER BEING SET ON A SPLIT. CALCULATED CORNER ON SPLIT (SINGLE PROPORTION) BETWEEN EXISTING SECTION CORNERS. SEE QUIT CLAIM DESCRIPTION IN O.R. 2061 PG. 3137 AND CITY OF BONITA SPRINGS ANNEXATION DESCRIPTION IN ORDINANCE 03-09.

HORIZONTAL POSITION INFORMATION

Florida West Zone, NAD 1983(2007 Adjustment)

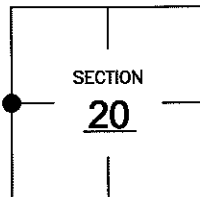
Northing(ft) 739507.80 Easting(ft) 741544.91

Latitude 26°22'04.5614" Longitude 81°44'21.2646"

Scale Factor 0.99995

CORNER DESCRIPTION

W 1/4 Corner
Section 20
Township 47
Range 26



EXISTING CERTIFIED CORNER RECORDS

Document No.	Date
<u>26261</u>	<u>7-20-87</u>
_____	_____
_____	_____
_____	_____

The above documents are based on FDEP Bureau of Surveying and Mapping Record Information.

I hereby certify the monument and accessories shown above were field located on 4-1-10.

Scott C. Whitaker

SCOTT C. WHITAKER
Professional Surveyor and Mapper
Florida Certificate No. 4324
Date Signed 4/26/10

BEAN, WHITAKER, LUTZ & KAREH, INC. (LB 4919)
13041 McGregor Boulevard
Fort Myers, Florida 33919-5910
Phone: (239) 481-1331

POINT NO. 15055

BLM REFERENCE NO. T47SR26E200340