

# CERTIFIED CORNER RECORD

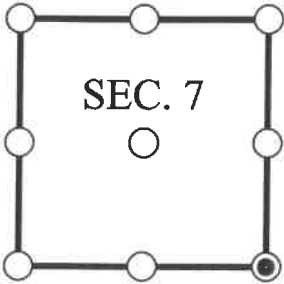
DOC. # \_\_\_\_\_

SE Corner of Section 7, Township 47, Range 26, LEE County

- GLO CORNER (PROVEN)  
  LAND GRANT CORNER  
  HISTORIC CORNER  
  OTHER CORNER

CORNER DESCRIPTION:                      MONUMENT DESCRIPTION (EVIDENCE FOUND OR METHOD USED TO SET)

Depict corner with



- EXISTING  
 OBLITERATED  
 LOST

FOUND 3x3" CONCRETE MONUMENT POST WITH ALUMINUM CAP STAMPED LB 642 CONSISTENT WITH CORNER RECORD 099786.

HORIZONTAL POSITION INFORMATION ( if determined ):

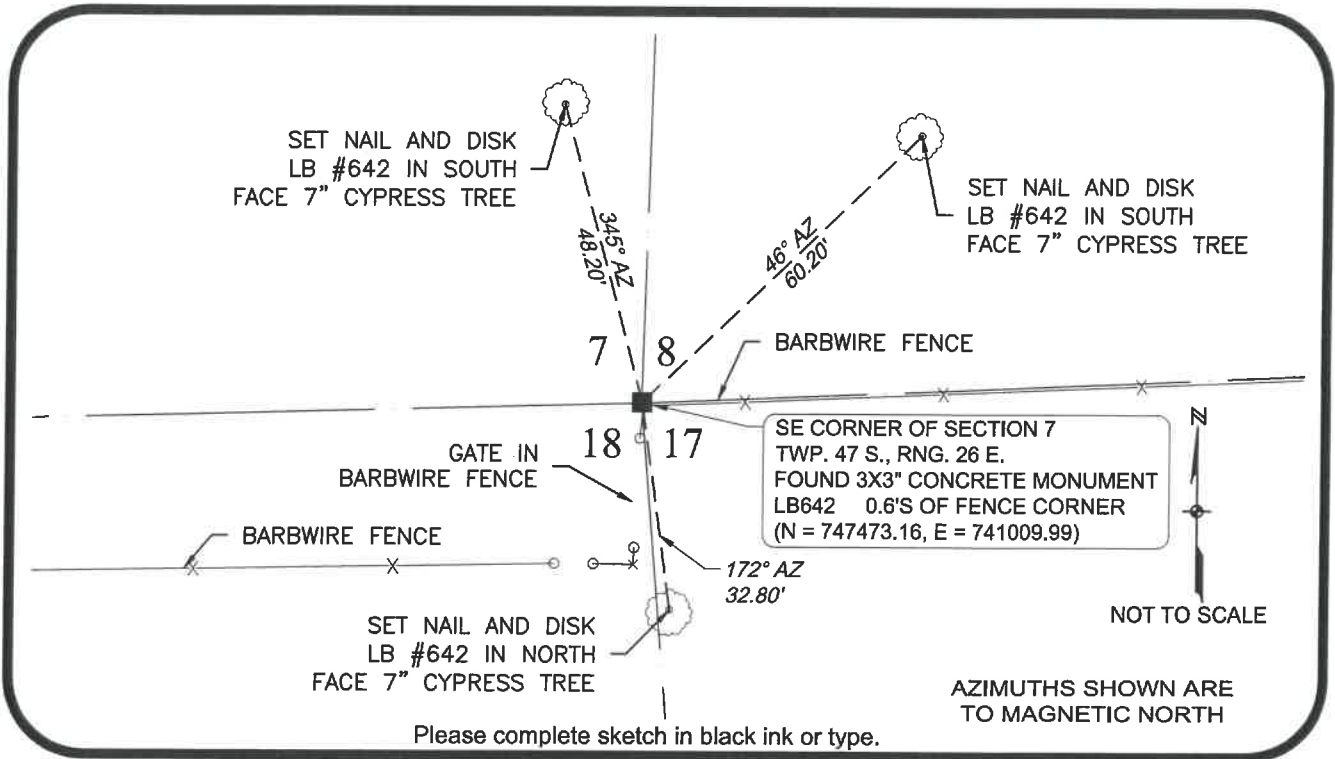
Latitude: N26° 23' 23.4634"                      Longitude: W81° 44' 26.9700"

Y(NORTHING-Ft.) 747473.161 X(EASTING-Ft.) 741009.987 Zone FL West

Horizontal datum: NAD83(2011)

Source: \_\_\_\_\_

Determined by: GPS (VRS)



**SURVEYORS CERTIFICATE:**

I certify the monument and accessories indicated above were field located on 10/06/2017

SIGNATURE \_\_\_\_\_ 4912 PSM NO.  
 Johnson Engineering, Inc. 642  
 FIRM OR AGENCY LB NO.  
 2122 Johnson Street  
 ADDRESS  
 Fort Myers Florida 33901  
 CITY STATE ZIP  
 866-367-4400  
 PHONE NUMBER DATE

SEND ORIGINAL TO:  
 Department of Environmental Protection  
 Bureau of Surveying and Mapping  
 3900 Commonwealth Boulevard  
 Mail Station 105  
 Tallahassee, Florida 32399

**NOTE: Do not make changes to this form**

D.E.P. USE ONLY

Processed: \_\_\_\_\_

B.L.M. - I.D. \_\_\_\_\_

QUAD - I.D. \_\_\_\_\_

**EMBOSSSED SEAL OVER SIGNATURE**