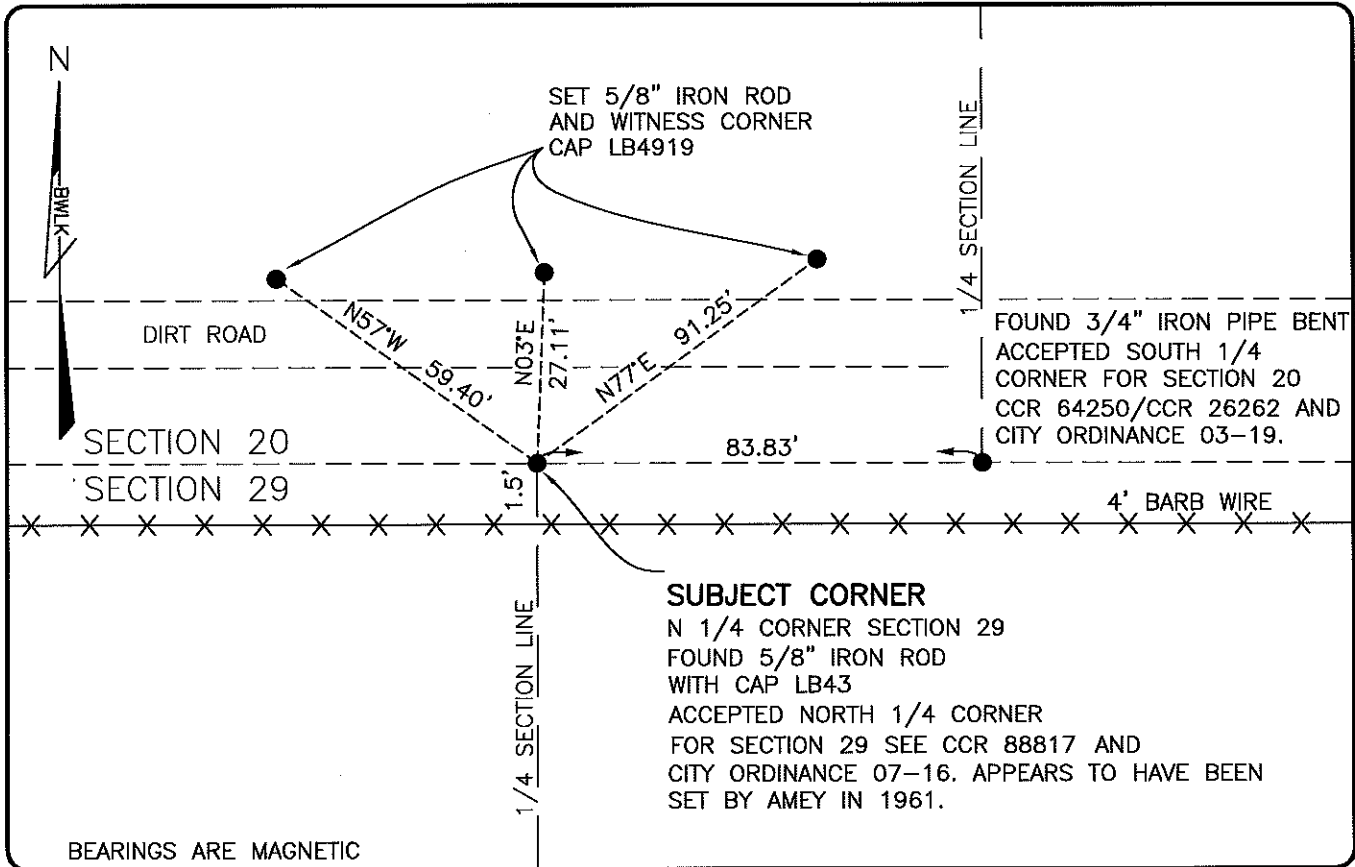


LAND CORNER RECORD

**PUBLIC WORKS
LEE COUNTY, FLORIDA**

Address - 1500 Monroe St., Ft. Myers, Fla. 33901

Phone : (239) 479-8900



COMMENTS:

FOUND SUBJECT CORNER IN HARMONY WITH HISTORICAL RECORDS OF AMEY, INC. DATED 1961. A MULTIPLE SECTION SURVEY PREPARED BY JOHNSON ENGINEERING IN 1987 SHOWS THIS CORNER BEING SET ON A SPLIT BETWEEN TWO SECTION CORNERS WHICH SPLIT FALLS 84'+/- EAST OF THIS AMEY CORNER. SEE AMEY SURVEY FOR SUNCOAST ESTATES (1961) AND CITY OF BONITA SPRINGS ANNEXATION DESCRIPTION IN ORDINANCE 07-16. IT APPEARS DIFFERENT 1/4 CORNERS HAVE BEEN HELD WITHIN EACH SECTION (20 AND 29). THIS CORNER HAS THE POTENTIAL OF BEING DISPUTED.

HORIZONTAL POSITION INFORMATION

Florida West Zone, NAD 1983(2007 Adjustment)

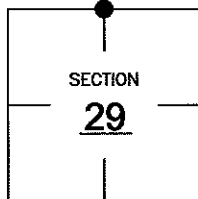
Northing(ft) 736913.54 Easting(ft) 744230.47

Latitude 26°21'38.8124" Longitude 81°43'51.7965"

Scale Factor 0.99995

CORNER DESCRIPTION

N 1/4 Corner
Section 29
Township 47
Range 26



EXISTING CERTIFIED CORNER RECORDS

Document No.	Date
<u>88817</u>	<u>8-29-06</u>
<u>64250</u>	<u>4-9-99</u>
<u>26262</u>	<u>7-20-87</u>

The above documents are based on FDEP Bureau of Surveying and Mapping Record Information.

I hereby certify the monument and accessories shown above were field located on 3-3-10.

Scott C. Whitaker
SCOTT C. WHITAKER
Professional Surveyor and Mapper
Florida Certificate No. 4324
Date Signed 4-26-10

BEAN, WHITAKER, LUTZ & KAREH, INC. (LB 4919)
13041 McGregor Boulevard
Fort Myers, Florida 33919-5910
Phone: (239) 481-1331

POINT NO. 15052

BLM REFERENCE NO. T47SR26E240300