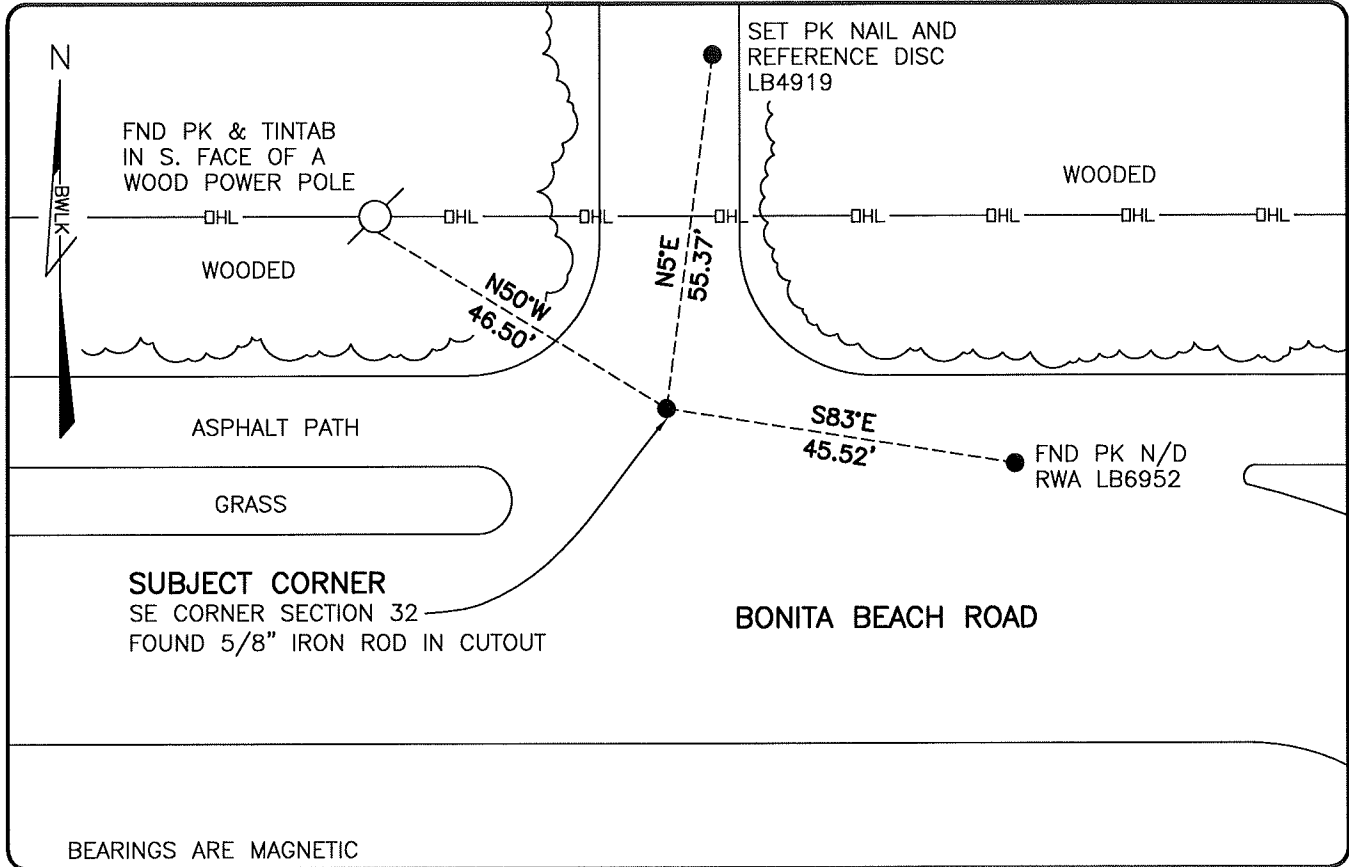


**LAND CORNER RECORD**

**PUBLIC WORKS  
LEE COUNTY, FLORIDA**

Address - 1500 Monroe St., Ft. Myers, Fla. 33901

Phone : (239) 479-8900



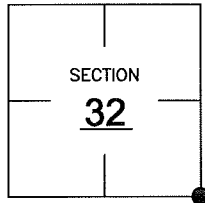
BEARINGS ARE MAGNETIC

**COMMENTS:**

FOUND SUBJECT CORNER IN HARMONY WITH STATE PLANE CO-ORDINATE VALUES ON CCR 64264 AND HISTORICAL RECORDS. A MULTIPLE SECTION SURVEY PREPARED BY JOHN AMEY IN 1961 SHOWS CALCULATED DIMENSIONS TO THIS CORNER. FIELD LOCATED CORNER WAS FOUND TO BE IN HARMONY WITH DIMENSIONS SHOWN ON 1961 SURVEY.

**CORNER DESCRIPTION**

SE Corner  
Section 32  
Township 47  
Range 26



**HORIZONTAL POSITION INFORMATION**

Florida West Zone, NAD 1983(2007 Adjustment)

Northing(ft) 726388.25 Easting(ft) 747074.86

Latitude 26°19'54.5068" Longitude 81°43'20.7734"

Scale Factor 0.99995

**EXISTING CERTIFIED CORNER RECORDS**

Document No.	Date
<u>64264</u>	<u>10-17-97</u>
<u>69230</u>	<u>10-3-00</u>
<u>40090</u>	<u>8-23-91</u>

The above documents are based on FDEP Bureau of Surveying and Mapping Record Information.

I hereby certify the monument and accessories shown above were field located on 1-9-09.

*Scott C. Whitaker*

**SCOTT C. WHITAKER**  
Professional Surveyor and Mapper  
Florida Certificate No. 4324  
Date Signed 2-12-09

BEAN, WHITAKER, LUTZ & KAREH, INC. (LB 4919)  
13041 McGregor Boulevard  
Fort Myers, Florida 33919-5910  
Phone: (239) 481-1331

POINT NO. 15012

BLM REFERENCE NO. T47SR26E300100