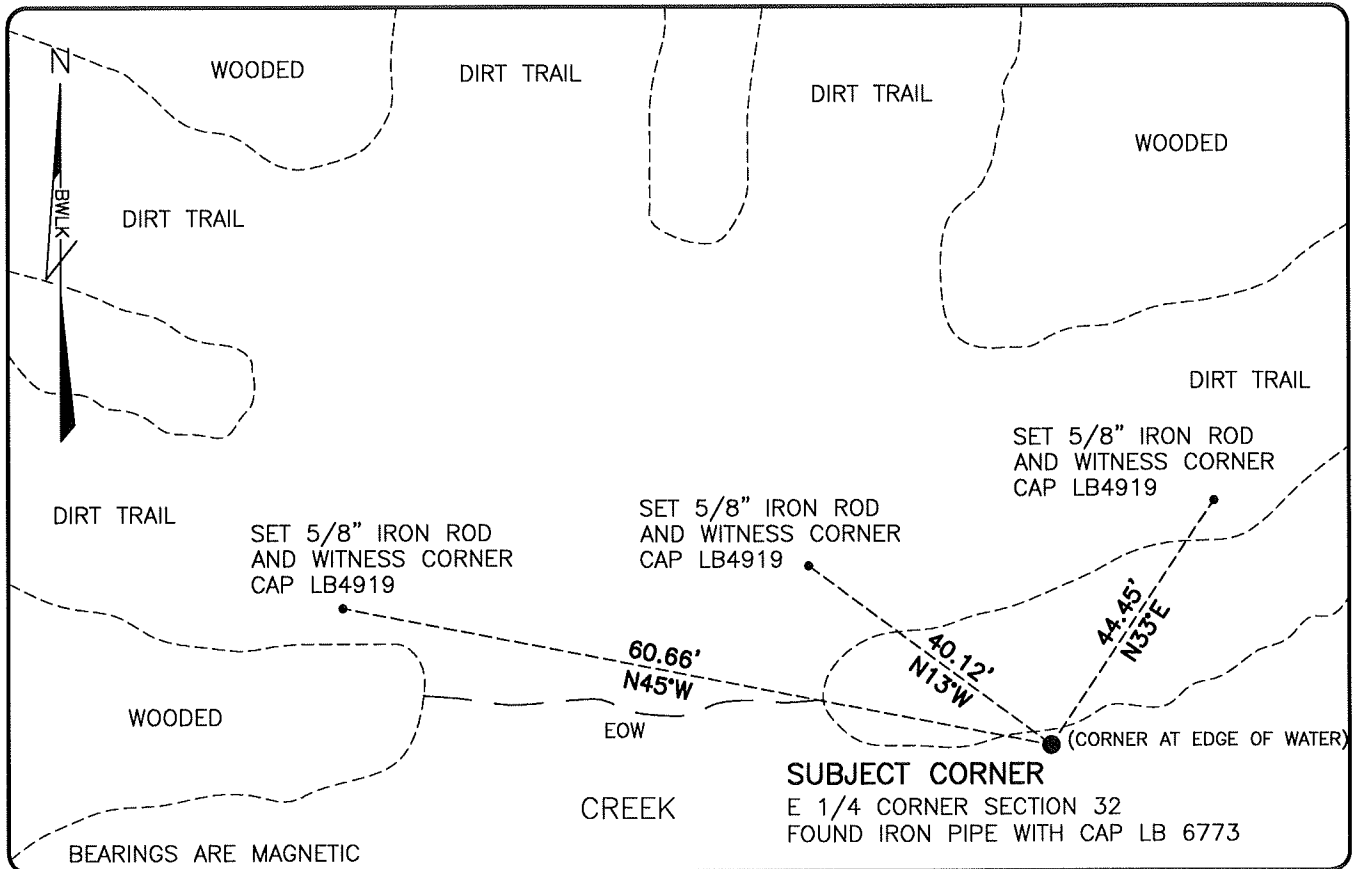


LAND CORNER RECORD

**PUBLIC WORKS
LEE COUNTY, FLORIDA**

Address - 1500 Monroe St., Ft. Myers, Fla. 33901

Phone : (239) 479-8900

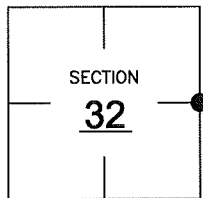


COMMENTS:

FOUND SUBJECT CORNER IN HARMONY WITH HISTORICAL RECORDS. A MULTIPLE SECTION SURVEY PREPARED BY JOHN AMEY IN 1961 SHOWS CALCULATED DIMENSIONS TO THIS CORNER, ALTHOUGH A MONUMENT WAS NOT SET AT THAT TIME. FIELD LOCATED CORNER WAS FOUND TO BE IN HARMONY WITH DIMENSIONS SHOWN ON 1961 SURVEY.

CORNER DESCRIPTION

E1/4 Corner
Section 32
Township 47
Range 26



HORIZONTAL POSITION INFORMATION

Florida West Zone, NAD 1983(2007 Adjustment)

Northing(ft) 729030.76 Easting(ft) 747011.76

Latitude 26°20'20.6805" Longitude 81°43'21.4046"

Scale Factor 0.99995

EXISTING CERTIFIED CORNER RECORDS

Document No.	Date

The above documents are based on FDEP Bureau of Surveying and Mapping Record Information.

I hereby certify the monument and accessories shown above were field located on 1-13-09

Scott C. Whitaker
SCOTT C. WHITAKER
Professional Surveyor and Mapper
Florida Certificate No. 4324
Date Signed 2-12-09

BEAN, WHITAKER, LUTZ & KAREH, INC. (LB 4919)
13041 McGregor Boulevard
Fort Myers, Florida 33919-5910
Phone: (239) 481-1331

POINT NO. 15015

BLM REFERENCE NO. T47SR26E300140