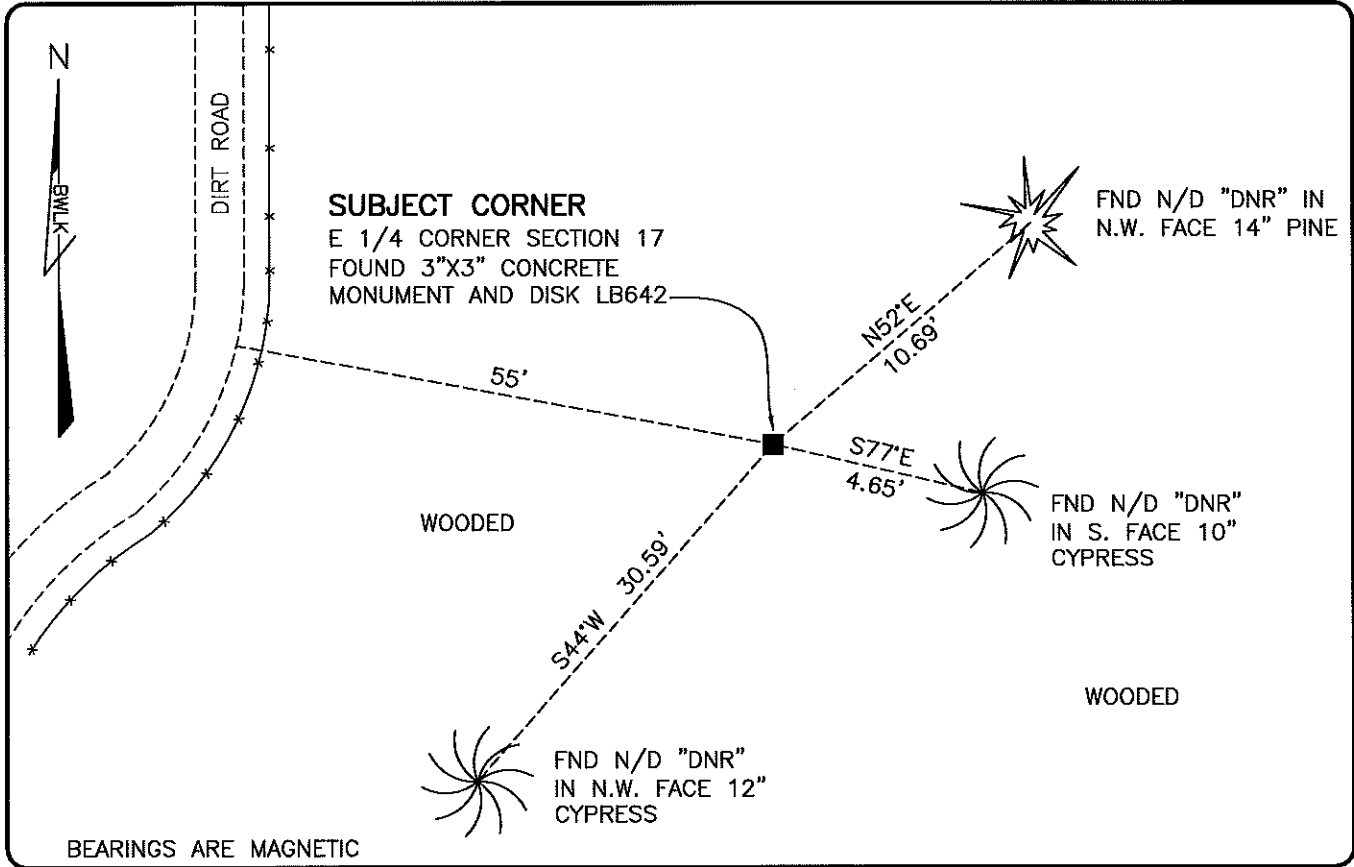


**LAND CORNER RECORD**

**PUBLIC WORKS  
LEE COUNTY, FLORIDA**

Address - 1500 Monroe St., Ft. Myers, Fla. 33901

Phone : (239) 479-8900



**COMMENTS:**

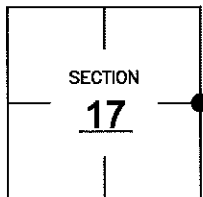
FOUND SUBJECT CORNER IN HARMONY WITH HISTORICAL RECORDS. A MULTIPLE SECTION SURVEY PREPARED BY JOHNSON ENGINEERING IN 1987 SHOWS THIS CORNER BEING SET ON A SPLIT. FIELD LOCATED CORNER WAS FOUND TO BE IN HARMONY WITH DIMENSIONS SHOWN ON SAID SURVEY. POSSIBLE DISPUTED CORNER BASED ON MULTIPLE MONUMENTS NEAR THE SOUTHEAST CORNER OF SECTION 17, HOWEVER NO EVIDENCE TO THIS WAS FOUND ON SURVEYS OR DESCRIPTIONS.

**HORIZONTAL POSITION INFORMATION**

Florida West Zone, NAD 1983(2007 Adjustment)  
 Northing(ft) 745016.44 Easting(ft) 746389.76  
 Latitude 26°22'59.0208" Longitude 81°43'27.8665"  
 Scale Factor 0.99995

**CORNER DESCRIPTION**

E 1/4 Corner  
 Section 17  
 Township 47  
 Range 26



**EXISTING CERTIFIED CORNER RECORDS**

Document No.	Date
<u>26252</u>	<u>7-20-87</u>

The above documents are based on FDEP Bureau of Surveying and Mapping Record Information.

I hereby certify the monument and accessories shown above were field located on 3-3-10.

*Scott C. Whitaker*  
**SCOTT C. WHITAKER**  
 Professional Surveyor and Mapper  
 Florida Certificate No. 4324  
 Date Signed 4/26/10

BEAN, WHITAKER, LUTZ & KAREH, INC. (LB 4919)  
 13041 McGregor Boulevard  
 Fort Myers, Florida 33919-5910  
 Phone: (239) 481-1331

POINT NO. 15050

BLM REFERENCE NO. T47SR26E300440