

CERTIFIED CORNER RECORD

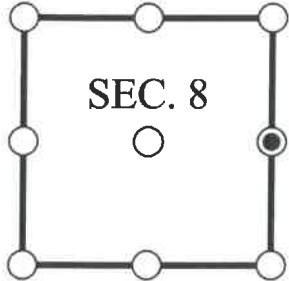
DOC. # _____

E 1/4 Corner of Section 8, Township 47, Range 26, LEE County

- GLO CORNER (PROVEN)
 LAND GRANT CORNER
 HISTORIC CORNER
 OTHER CORNER

CORNER DESCRIPTION: MONUMENT DESCRIPTION (EVIDENCE FOUND OR METHOD USED TO SET)

Depict corner with



FOUND 4x4" CONCRETE MONUMENT POST WITH "X" MARK CONSISTENT WITH CORNER RECORD 099785.

HORIZONTAL POSITION INFORMATION (if determined):

Latitude: N26° 23' 52.2411" Longitude: W81° 43' 29.3057"

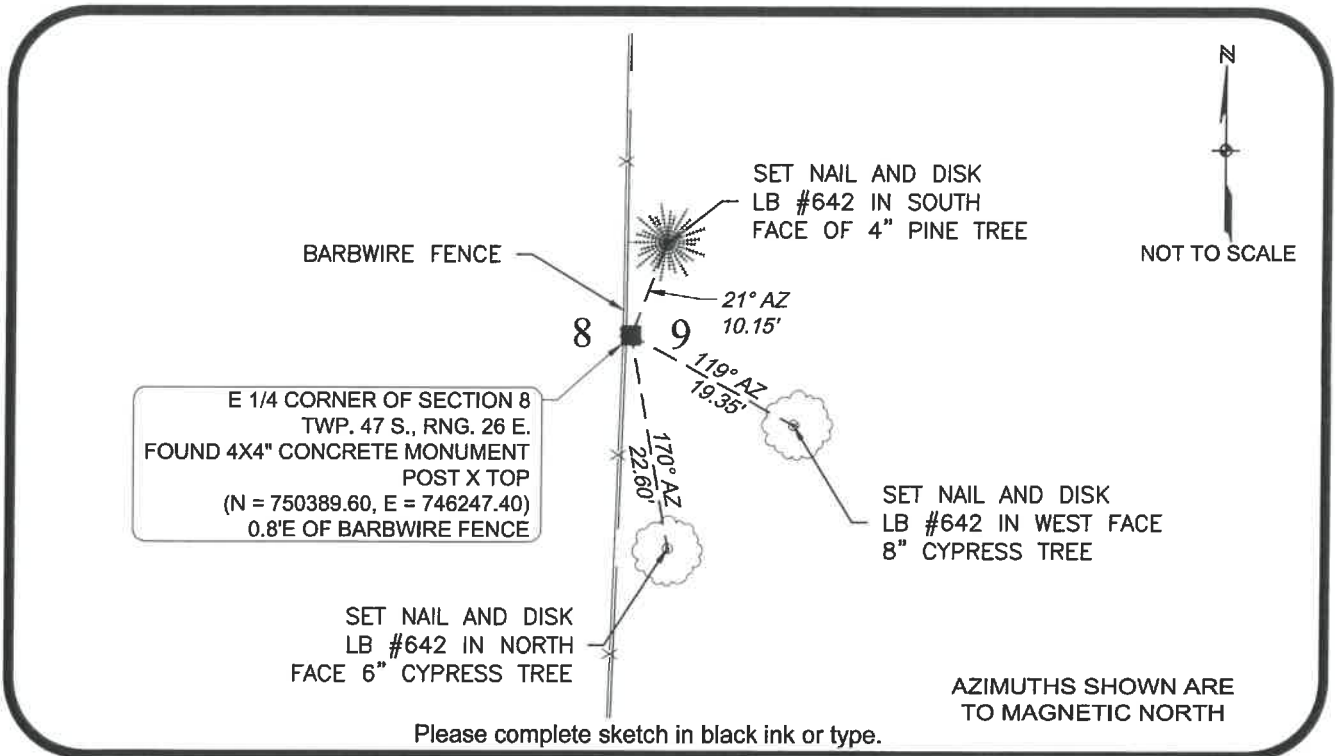
Y(NORTHING-Ft.) 750389.601 X(EASTING-Ft.) 746247.403 Zone FL West

Horizontal datum: NAD83(2011)

Source: _____

Determined by: GPS (VRS)

- EXISTING
 OBLITERATED
 LOST



SURVEYORS CERTIFICATE:

I certify the monument and accessories indicated above were field located on 10/05/2017

SIGNATURE _____ 4912 _____
 Johnson Engineering, Inc. PSM NO. 642
 FIRM OR AGENCY LB NO. _____
 2122 Johnson Street
 ADDRESS
 Fort Myers Florida 33901
 CITY STATE ZIP
 866-367-4400
 PHONE NUMBER DATE

SEND ORIGINAL TO:
 Department of Environmental Protection
 Bureau of Surveying and Mapping
 3900 Commonwealth Boulevard
 Mail Station 105
 Tallahassee, Florida 32399

NOTE: Do not make changes to this form

| D.E.P. USE ONLY | |
|-----------------|-------|
| Processed: | _____ |
| B.L.M. - I.D. | _____ |
| QUAD - I.D. | _____ |

EMBOSSSED SEAL OVER SIGNATURE