

# CERTIFIED CORNER RECORD

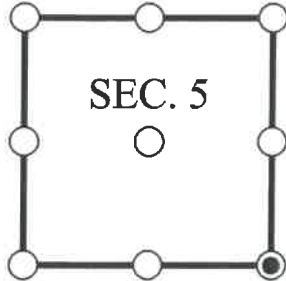
DOC. # \_\_\_\_\_

SE Corner of Section 5, Township 47, Range 26, LEE County

- GLO CORNER (PROVEN)  
  LAND GRANT CORNER  
  HISTORIC CORNER  
  OTHER CORNER

CORNER DESCRIPTION:      MONUMENT DESCRIPTION (EVIDENCE FOUND OR METHOD USED TO SET)

Depict corner with



FOUND 4x4" CONCRETE MONUMENT POST WITH "X" TOP AT LOCATION SHOWN ON PREVIOUS SURVEY OF SECTIONS 5 AND 8 BY JOHNSON ENGINEERING, INC, DATED 08/15/2003.

HORIZONTAL POSITION INFORMATION ( if determined ):

Latitude: N26° 24' 19.3529" Longitude: W81° 43' 28.9903"

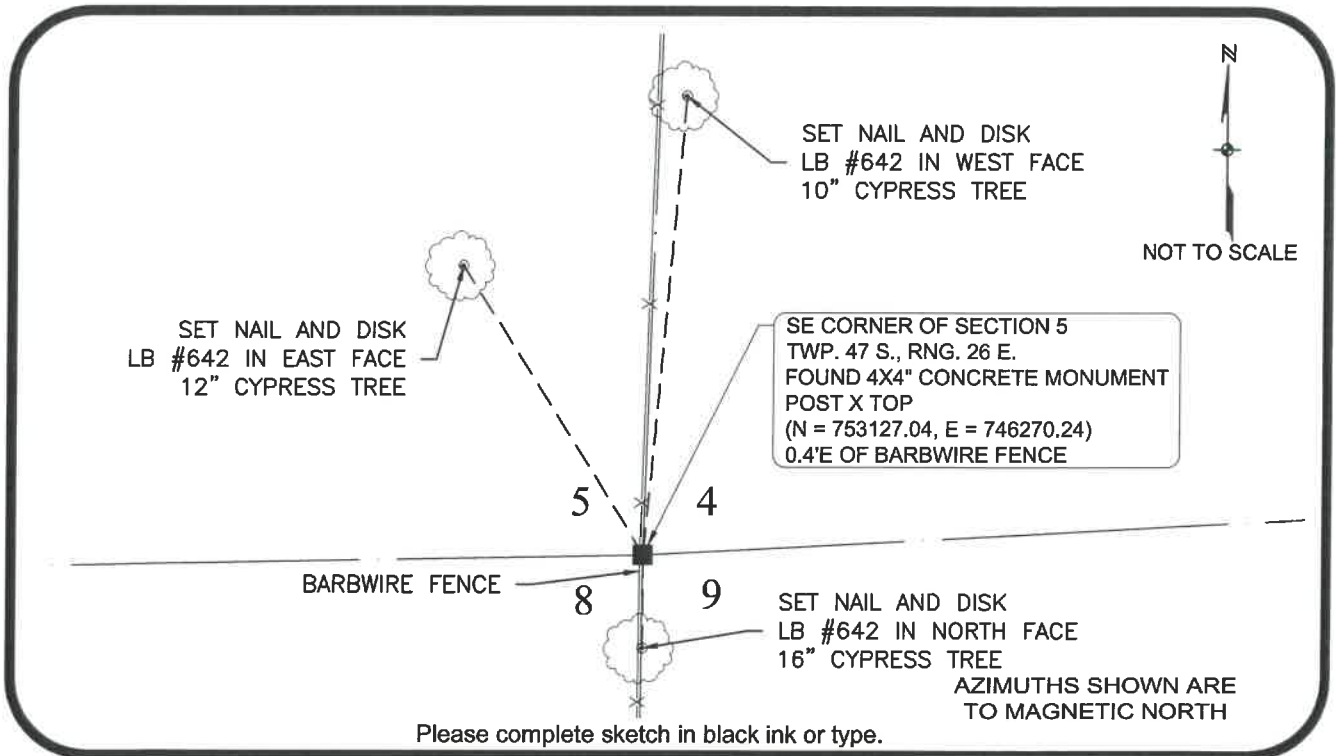
Y(NORTHING-Ft.) 753127.039 X(EASTING-Ft.) 746270.239 Zone FL West

Horizontal datum: NAD83(2011)

Source: \_\_\_\_\_

Determined by: GPS (VRS)

- EXISTING  
 OBLITERATED  
 LOST



**SURVEYORS CERTIFICATE:**

I certify the monument and accessories indicated above were field located on 10/05/2017

SIGNATURE \_\_\_\_\_ 4912 PSM NO. \_\_\_\_\_  
 Johnson Engineering, Inc. 642 LB NO. \_\_\_\_\_  
 FIRM OR AGENCY  
 2122 Johnson Street  
 ADDRESS  
 Fort Myers Florida 33901  
 CITY STATE ZIP  
 866-367-4400  
 PHONE NUMBER DATE

SEND ORIGINAL TO:  
 Department of Environmental Protection  
 Bureau of Surveying and Mapping  
 3900 Commonwealth Boulevard  
 Mail Station 105  
 Tallahassee, Florida 32399

**NOTE: Do not make changes to this form**

D.E.P. USE ONLY

Processed: \_\_\_\_\_

B.L.M. - I.D. \_\_\_\_\_

QUAD - I.D. \_\_\_\_\_

**EMBOSSSED SEAL OVER SIGNATURE**