

FLORIDA DEPARTMENT OF ENVIRONMENTAL PROTECTION
CERTIFIED CORNER RECORD

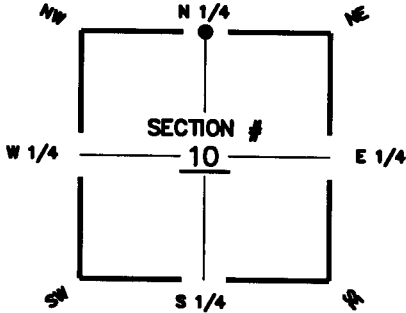
DOC. # 097173

CORNER DESCRIPTION:

MONUMENTATION DESCRIPTION (EVIDENCE FOUND OR METHOD TO SET)

Depict corner with ●

SET $\frac{1}{8}$ " IRON ROD & CAP ABB INC. LB 3664

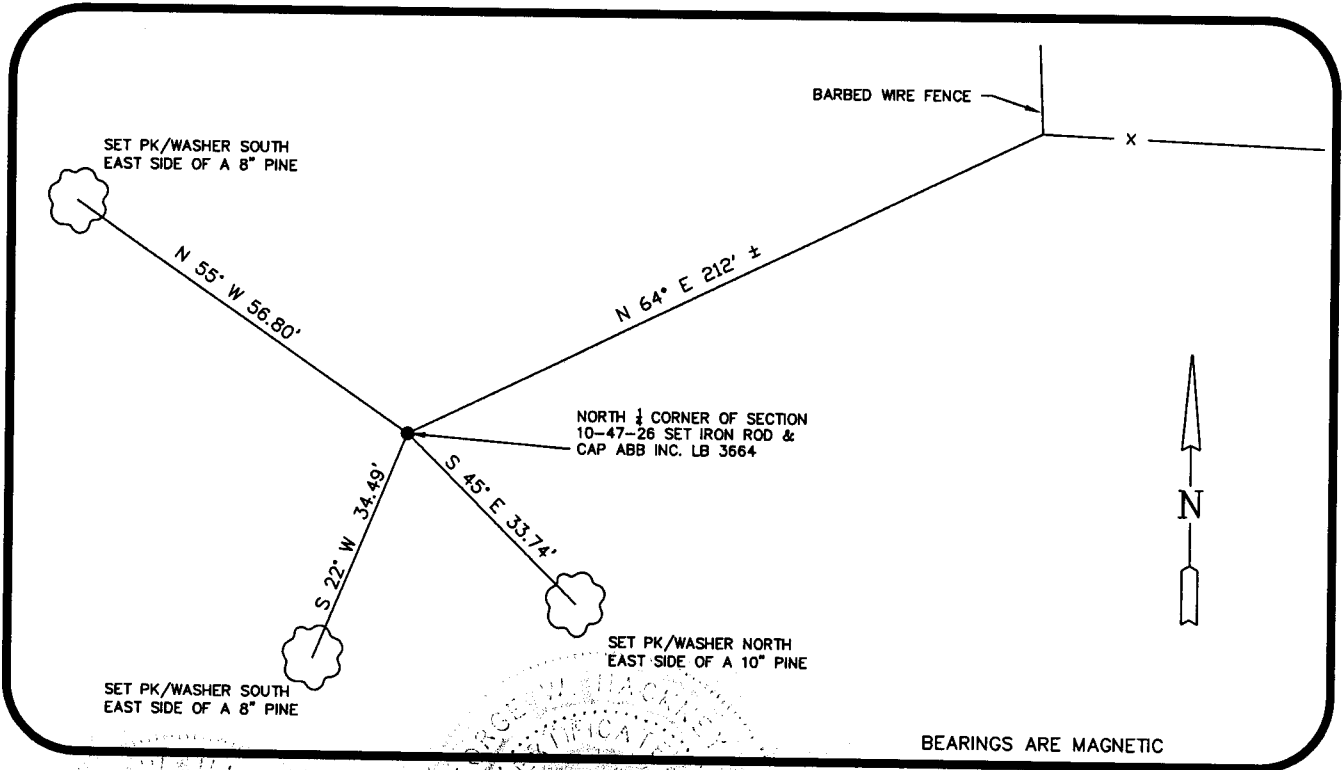


N1/4 corner of Section 10
Twp 47 S, Rge. 26 E
Tallahassee Base Meridian,
Lee County(s), Florida

HORIZONTAL POSITION INFORMATION (if determined):

Latitude 26°24'21.1434" Longitude 81°42'00.1190"
Y(NORTHING-Ft.) 753325.86 X(EASTING-Ft.) 754350.12 Zone FLW
Convergence 0-08-00.2558 Scale factor 0.99995223

Coordinate determination (circle one): Field traverse GPS
Horizontal datum (circle one): NAD27 NAD83(1986) NAD83(1990) other (explain)
Accuracy (circle one): 1st 2nd 3rd other _____



SURVEYORS CERTIFICATE:

I certify the monument and accessories indicated above were field located on 12-10-08

George W. Hackney
George W. Hackney 5606
Agnoli, Barber & Brundage 3664
7400 Tamiami Tr. N., Suite 200
Naples FL 34108
(239) 597-3111 12-10-08

SEND ORIGINAL TO:
Department of Environmental Protection
Bureau of Surveying and Mapping
3900 Commonwealth Boulevard
Mail Station 105
Tallahassee, Florida 32399

D.E.P. USE ONLY
Processed: 05-05-09 JH
B.L.M. - I.D. 440600
QUAD - I.D. 2014 CORKSCREW NW

EMBOSSSED SEAL OVER SIGNATURE