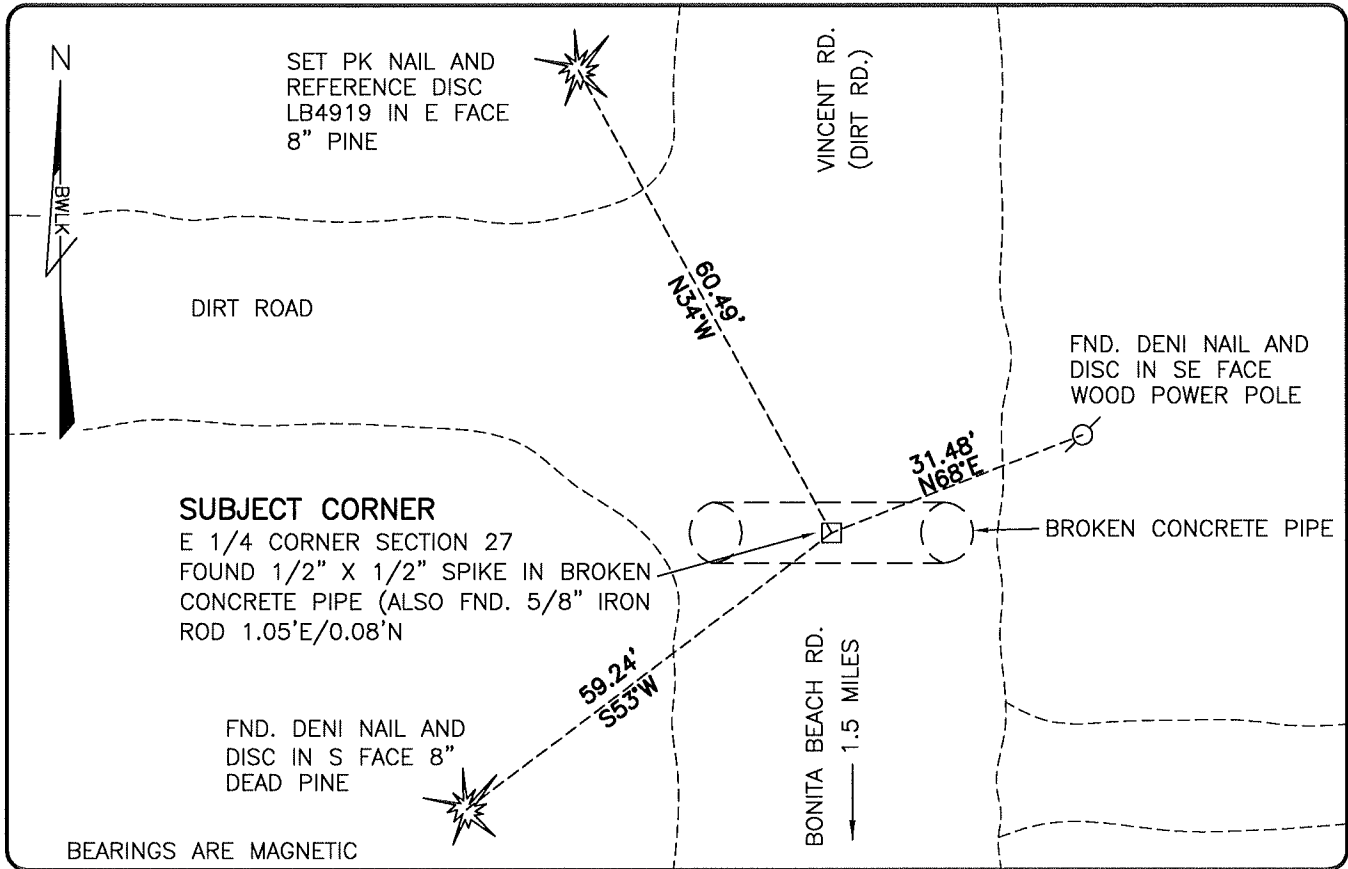


LAND CORNER RECORD

**PUBLIC WORKS
LEE COUNTY, FLORIDA**

Address - 1500 Monroe St., Ft. Myers, Fla. 33901

Phone : (239) 479-8900

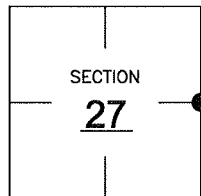


COMMENTS:

FOUND SUBJECT CORNER IN HARMONY WITH HISTORICAL RECORDS. A MULTIPLE SECTION SURVEY PREPARED BY JOHN AMEY IN 1961 SHOWS CALCULATED DIMENSIONS TO THIS CORNER, ALTHOUGH A MONUMENT WAS NOT SET AT THAT TIME. FIELD LOCATED CORNER WAS FOUND TO BE IN HARMONY WITH DIMENSIONS SHOWN ON 1961 SURVEY. THIS CORNER WAS NOT SURVEYED BY THE GLO.

CORNER DESCRIPTION

E1/4 Corner
Section 27
Township 47
Range 26



HORIZONTAL POSITION INFORMATION

Florida West Zone, NAD 1983(2007 Adjustment)
 Northing(ft) 734538.03 Easting(ft) 757387.16
 Latitude 26°21'14.9928" Longitude 81°41'27.2115"
 Scale Factor 0.99995

EXISTING CERTIFIED CORNER RECORDS

Document No.	Date
<u>69222</u>	<u>9-28-00</u>
<u>40098</u>	<u>8-23-91</u>

The above documents are based on FDEP Bureau of Surveying and Mapping Record Information.

I hereby certify the monument and accessories shown above were field located on 1-21-09.

Scott C. Whitaker
SCOTT C. WHITAKER
 Professional Surveyor and Mapper
 Florida Certificate No. 4324
 Date Signed 2-6-09

BEAN, WHITAKER, LUTZ & KAREH, INC. (LB 4919)
 13041 McGregor Boulevard
 Fort Myers, Florida 33919-5910
 Phone: (239) 481-1331

POINT NO. 15023

BLM REFERENCE NO. T47SR26E500240