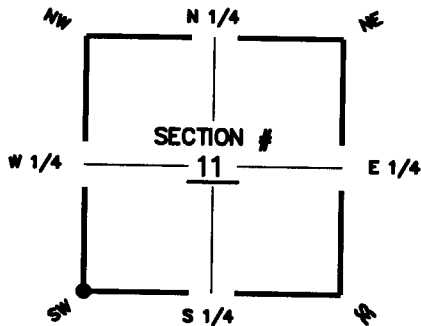


FLORIDA DEPARTMENT OF ENVIRONMENTAL PROTECTION  
CERTIFIED CORNER RECORD

DOC. # 097181

CORNER DESCRIPTION:

Depict corner with  ●



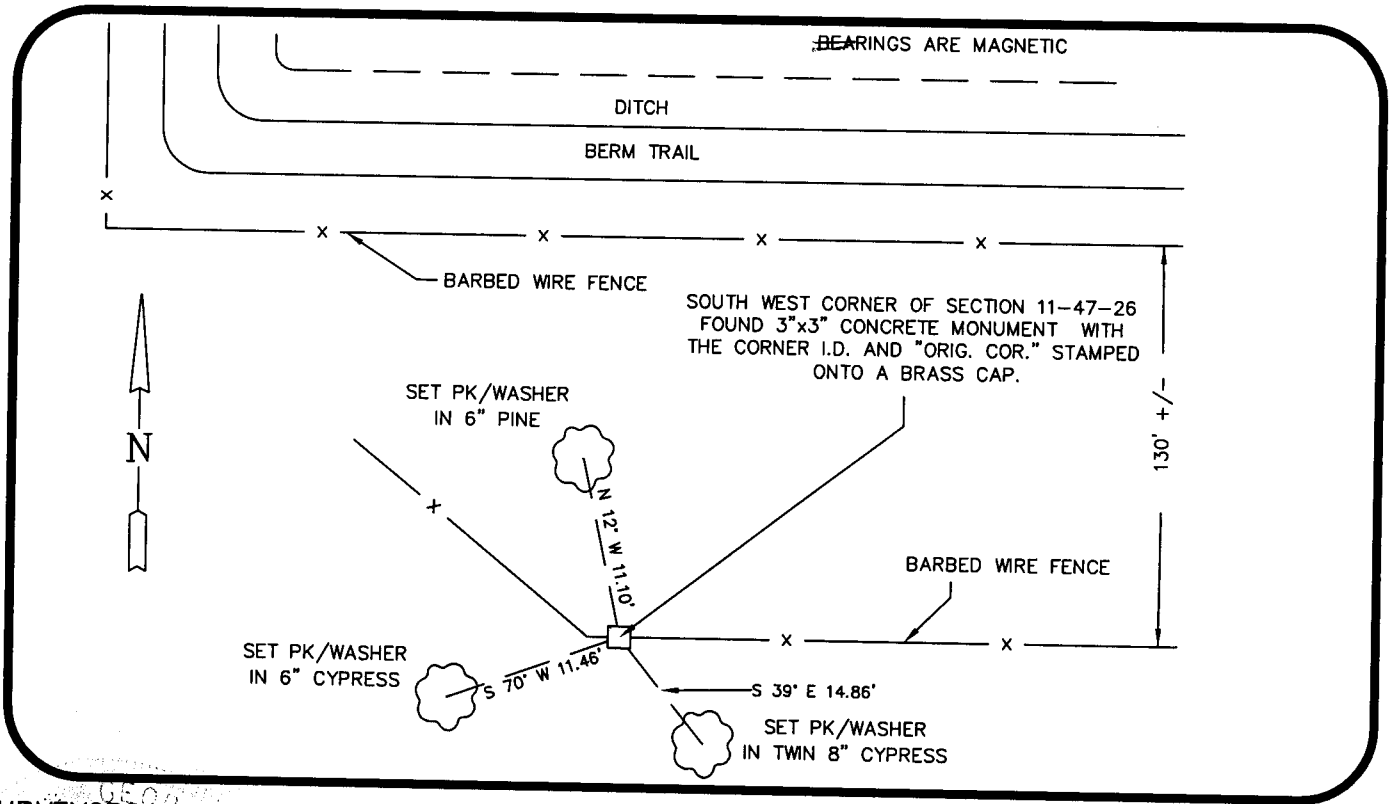
SW corner of Section 11  
Twp 47 S, Rge 26 E  
Tallahassee Base Meridian,  
Lee County(s), Florida

MONUMENTATION DESCRIPTION (EVIDENCE FOUND OR METHOD TO SET)

FOUND 3"x3" CONCRETE MONUMENT WITH  
THE CORNER I.D. AND "ORIG. COR." STAMPED  
ONTO A BRASS CAP.

HORIZONTAL POSITION INFORMATION ( if determined ):

Latitude 26°23'28.2096" Longitude 81°41'30.6060"  
Y(NORTHING-Ft.) 747987.66 X(EASTING-Ft.) 757046.26 Zone FLW  
Convergence 0-08-13.1263 Scale factor 0.99995284  
Coordinate determination (circle one): Field traverse  GPS  
Horizontal datum (circle one): NAD27 NAD83(1986)  NAD83(1990) other (explain)  
Accuracy (circle one): 1st 2nd 3rd other \_\_\_\_\_



SURVEYORS CERTIFICATE:

I certify the monument and accessories indicated above were field located on 9-30-08

George W. Hackney 5606  
SIGNATURE  
Agnol, Barber & Brundage 3664  
FIRM OR AGENCY  
7400 Tamiami Tr. N., Suite 200  
ADDRESS  
Naples FL 34108  
CITY STATE ZIP  
(239) 597-3111 10-1-08  
PHONE NUMBER DATE

SEND ORIGINAL TO:  
Department of Environmental Protection  
Bureau of Surveying and Mapping  
3900 Commonwealth Boulevard  
Mail Station 105  
Tallahassee, Florida 32399

D.E.P. USE ONLY

Processed: 05-05-09 JH

B.L.M. - I.D. 500500

QUAD - I.D. 2014 CORKSCREW NW

EMBOSSED SEAL OVER SIGNATURE